

Product datasheet for **AP11634PU-N**

SIGLEC9 (C-term) Rabbit Polyclonal Antibody

Product data:

Product Type:	Primary Antibodies
Applications:	IHC, WB
Recommended Dilution:	ELISA: 1/1,000. Western blot: 1/1000. Immunohistochemistry on Paraffin Sections: 1/50-1/100.
Reactivity:	Human, Mouse
Host:	Rabbit
Isotype:	Ig
Clonality:	Polyclonal
Immunogen:	KLH conjugated synthetic peptide between 385-415 amino acids from the C-terminal region of human SIGLEC9.
Specificity:	This antibody detects SIGLEC9 at C-term.
Formulation:	PBS with 0.09% (W/V) sodium azide State: Purified State: Liquid Ig fraction
Concentration:	lot specific
Purification:	Saturated Ammonium Sulfate (SAS) precipitation followed by dialysis against PBS
Conjugation:	Unconjugated
Storage:	Store undiluted at 2-8°C for one month or (in aliquots) at -20°C for longer. Avoid repeated freezing and thawing.
Stability:	Shelf life: one year from despatch.
Gene Name:	sialic acid binding Ig like lectin 9
Database Link:	Entrez Gene 27180 Human Q9Y336



[View online »](#)

Background: SIGLEC9 is a putative adhesion molecule that mediates sialic-acid dependent binding to cells. It preferentially binds to alpha-2,3- or alpha-2,6-linked sialic acid. The sialic acid recognition site may be masked by cis interactions with sialic acids on the same cell surface. This protein is expressed by peripheral blood leukocytes (neutrophils and monocytes but not eosinophils). It is found in liver, fetal liver, bone marrow, placenta, spleen and in lower levels in skeletal muscle, fetal brain, stomach, lung, thymus, prostate, brain, mammary, adrenal gland, colon, trachea, cerebellum, testis, small intestine and spinal cord. SIGLEC9 contains 1 copy of a cytoplasmic motif that is referred to as the immunoreceptor tyrosine-based inhibitor motif (ITIM). This motif is involved in modulation of cellular responses. The phosphorylated ITIM motif can bind the SH2 domain of several SH2-containing phosphatases.

Synonyms: SIGLEC-9, CDw329, FOAP-9, OBBP-like

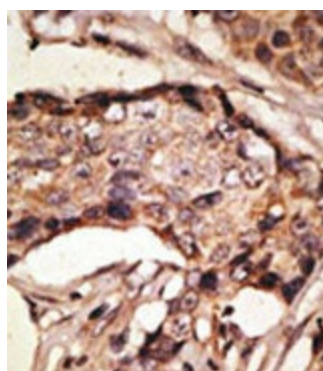
Note: Molecular weight: 50081 Da

Protein Families: Druggable Genome, Transmembrane

Product images:



The anti-Siglec9 C-term is used in Western blot to detect Siglec9 in mouse liver tissue lysate.



Formalin-fixed and paraffin-embedded human breast carcinoma reacted with the primary antibody, which was peroxidase-conjugated to the secondary antibody, followed by AEC staining. This data demonstrates the use of this antibody for immunohistochemistry; clinical relevance has not been evaluated.