

Product datasheet for **AP11629PU-N**

SIGLEC6 (C-term) Rabbit Polyclonal Antibody

Product data:

Product Type:	Primary Antibodies
Applications:	IHC, WB
Recommended Dilution:	ELISA 1:1,000. Western blot 1:100 - 1:500. Immunohistochemistry 1:50 - 1:100.
Reactivity:	Human, Mouse
Host:	Rabbit
Isotype:	Ig
Clonality:	Polyclonal
Immunogen:	This antibody is generated from rabbits immunized with a KLH conjugated synthetic peptide selected from the C-terminal region of human SIGLEC6.
Specificity:	This antibody detects SIGLEC6 at C-term.
Formulation:	PBS with 0.09% (W/V) sodium azide State: Purified State: Liquid Ig fraction
Concentration:	lot specific
Purification:	Protein G column, eluted with high and low pH buffers and neutralized immediately, followed by dialysis against PBS
Conjugation:	Unconjugated
Storage:	Store the antibody at 2 - 8 °C up to one month or (in aliquots) at -20 °C for longer. Avoid repeated freezing and thawing.
Stability:	Shelf life: one year from despatch.
Gene Name:	sialic acid binding Ig like lectin 6
Database Link:	Entrez Gene 946 Human O43699



[View online »](#)

Background:

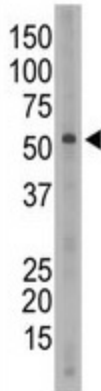
SIGLEC6 is a putative adhesion molecule that mediates sialic-acid dependent binding to cells by binding to alpha2,6-linked sialic acid. The sialic acid recognition site may be masked by cis interactions with sialic acids on the same cell surface. SIGLEC6, which interacts with LEP, is expressed at high levels in placenta (cyto-and syncytiotrophoblastic cells) and at lower levels in spleen, peripheral blood leukocytes (predominantly B-cells) and small intestine. It contains 1 copy of a cytoplasmic motif that is referred to as the immunoreceptor tyrosine-based inhibitor motif (ITIM). This motif is involved in downmodulation of cellular responses. The phosphorylated ITIM motif binds to the SH2 domain of PTPN6/SHP-1. The gene for SIGLEC6 belongs to the immunoglobulin superfamily.

Synonyms:

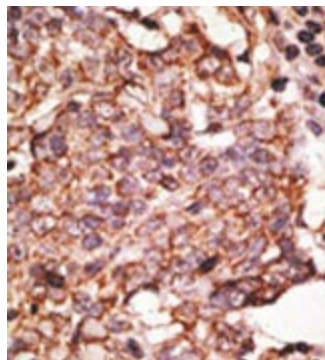
Siglec-6, Obesity-binding protein 1, CDw327, CD33L, CD33L1, OBBP1, OB-BP1

Note:

Molecular weight: 48822 Da

Product images:


The anti-Siglec6 C-term is used in Western blot to detect Siglec6 in mouse spleen tissue lysate.



Formalin-fixed and paraffin-embedded human breast carcinoma reacted with the primary antibody, which was peroxidase-conjugated to the secondary antibody, followed by AEC staining. This data demonstrates the use of this antibody for immunohistochemistry; clinical relevance has not been evaluated.