

Product datasheet for **AP11593PU-N**

VILIP3 (HPCAL1) (N-term) Rabbit Polyclonal Antibody

Product data:

| | |
|-----------------------|--|
| Product Type: | Primary Antibodies |
| Applications: | IHC, WB |
| Recommended Dilution: | ELISA 1:1,000. Western blot 1:100 - 1:500. Immunohistochemistry 1:50 - 1:100. |
| Reactivity: | Human, Mouse |
| Host: | Rabbit |
| Isotype: | Ig |
| Clonality: | Polyclonal |
| Immunogen: | This antibody is generated from rabbits immunized with a KLH conjugated synthetic peptide selected from the N-term region of human VILIP3. |
| Specificity: | This antibody VILIP3 at N-term. |
| Formulation: | PBS with 0.09% (W/V) sodium azide State: Purified State: Liquid Ig fraction |
| Concentration: | lot specific |
| Purification: | Protein G column, eluted with high and low pH buffers and neutralized immediately, followed by dialysis against PBS |
| Conjugation: | Unconjugated |
| Storage: | Store the antibody at 2 - 8 °C up to one month or (in aliquots) at -20 °C for longer. Avoid repeated freezing and thawing. |
| Stability: | Shelf life: one year from despatch. |
| Gene Name: | hippocalcin like 1 |
| Database Link: | Entrez Gene 3241 Human P37235 |



[View online »](#)

Background:

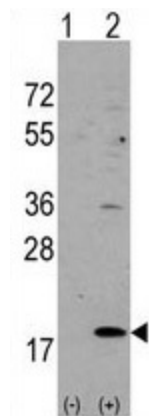
VILIP3 is a member of neuron-specific calcium-binding proteins family found in the retina and brain. It is highly similar to human hippocalcin protein and nearly identical to the rat and mouse hippocalcin like-1 proteins. It may be involved in the calcium-dependent regulation of rhodopsin phosphorylation and may be of relevance for neuronal signalling in the central nervous system. There are two alternatively spliced transcript variants of this gene, with multiple polyadenylation sites. Transcript variant 1 utilizes a different exon and also lacks one exon in the 5' UTR, as compared to variant 2; thus, the encoded protein is the same.

Synonyms:

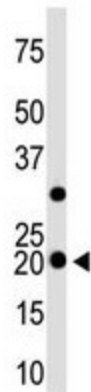
Visinin-like protein 3, VILIP-3, Neural visinin-like protein 3, NVL-3, NVP-3, HLP2, BDR1

Note:

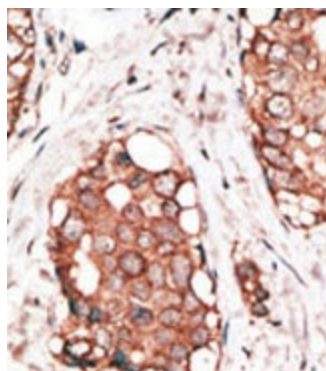
Molecular weight: 22182 Da

Product images:


Western blot analysis of VILIP3 (arrow) using rabbit polyclonal VILIP3 Antibody (N-term). 293 cell lysates (2 ug/lane) either nontransfected (Lane 1) or transiently transfected with the VILIP3 gene (Lane 2) (Origene Technologies).



The anti-VILIP3 is used in Western blot to detect VILIP3 in mouse cerebellum tissue lysate.



Formalin-fixed and paraffin-embedded human breast carcinoma reacted with the primary antibody, which was peroxidase-conjugated to the secondary antibody, followed by AEC staining. This data demonstrates the use of this antibody for immunohistochemistry; clinical relevance has not been evaluated.