

Product datasheet for **AP11591PU-N**

VILIP1 (VSNL1) (C-term) Rabbit Polyclonal Antibody

Product data:

| | |
|-----------------------|--|
| Product Type: | Primary Antibodies |
| Applications: | IHC, WB |
| Recommended Dilution: | ELISA: 1/1,000. Western blot: 1/100-1/500. Immunohistochemistry: 1/50-1/100. |
| Reactivity: | Human, Mouse |
| Host: | Rabbit |
| Isotype: | Ig |
| Clonality: | Polyclonal |
| Immunogen: | This antibody is generated from rabbits immunized with a KLH conjugated synthetic peptide selected from the C-term region of human VILIP1. |
| Specificity: | This antibody detects VILIP1 at C-term. |
| Formulation: | PBS with 0.09% (W/V) Sodium Azide as preservative. State: Purified State: Liquid purified Ig fraction. |
| Concentration: | lot specific |
| Purification: | Protein G Chromatography, eluted with high and low pH buffers and neutralized immediately, followed by dialysis against PBS |
| Conjugation: | Unconjugated |
| Storage: | Store the antibody undiluted at 2-8°C for one month or (in aliquots) at -20°C for longer. Avoid repeated freezing and thawing. |
| Stability: | Shelf life: one year from despatch. |
| Gene Name: | visinin like 1 |
| Database Link: | Entrez Gene 7447 Human P62760 |

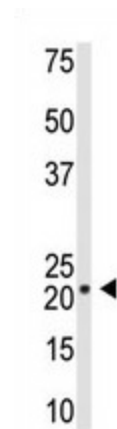
[View online »](#)

Background: The visinin and visinin-like peptides represent a family of calcium-binding proteins that are highly expressed in the retina. Visinin has been shown to be a cone cell-specific protein with a molecular weight of 24 kDa. Several members of the visinin family of genes have been isolated and characterized from different species. These peptides are believed to be involved in the processes of phototransduction. The recoverin gene (RCV1) is believed to be involved in the pathophysiology of retinopathy in cancer patients.

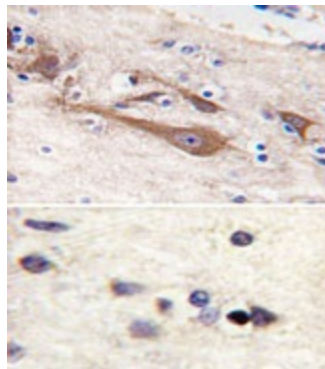
Synonyms: VILIP, VLP-1, VSNL1, VISL1, Neural visinin-like protein 1, NVL-1, NVP-1, Hippocalcin-like protein 3

Note: **Predicted Molecular weight:** 22011 Da

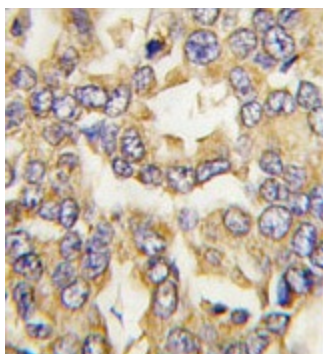
Product images:



The anti-VILIP1 is used in Western blot to detect VILIP1 in mouse brain tissue lysate.



Formalin-fixed and paraffin-embedded human brain tissue reacted with VILIP1 antibody (C-term), which was peroxidase-conjugated to the secondary antibody, followed by DAB staining. This data demonstrates the use of this antibody for immunohistochemistry; clinical relevance has not been evaluated.



Formalin-fixed and paraffin-embedded human breast carcinoma tissue reacted with VILIP1 antibody (C-term), which was peroxidase-conjugated to the secondary antibody, followed by DAB staining. This data demonstrates the use of this antibody for immunohistochemistry; clinical relevance has not been evaluated.