

## Product datasheet for **AP11582PU-N**

### **GJA8 (C-term) Rabbit Polyclonal Antibody**

#### **Product data:**

<b>Product Type:</b>	Primary Antibodies
<b>Applications:</b>	IHC, WB
<b>Recommended Dilution:</b>	ELISA 1:1,000. Western blot 1:100 - 1:500. Immunohistochemistry 1:50 - 1:100.
<b>Reactivity:</b>	Human, Mouse
<b>Host:</b>	Rabbit
<b>Isotype:</b>	Ig
<b>Clonality:</b>	Polyclonal
<b>Immunogen:</b>	This antibody is generated from rabbits immunized with a KLH conjugated synthetic peptide selected from the C-terminal region of human GJA8.
<b>Specificity:</b>	This antibody detects Connexin 50 (GJA8) at C-term.
<b>Formulation:</b>	PBS with 0.09% (W/V) sodium azide State: Purified State: Liquid Ig fraction
<b>Concentration:</b>	lot specific
<b>Purification:</b>	Protein G column, eluted with high and low pH buffers and neutralized immediately, followed by dialysis against PBS
<b>Conjugation:</b>	Unconjugated
<b>Storage:</b>	Store the antibody at 2 - 8 °C up to one month or (in aliquots) at -20 °C for longer. Avoid repeated freezing and thawing.
<b>Stability:</b>	Shelf life: one year from despatch.
<b>Gene Name:</b>	gap junction protein alpha 8
<b>Database Link:</b>	<a href="#">Entrez Gene 2703 Human P48165</a>



[View online »](#)

**Background:**

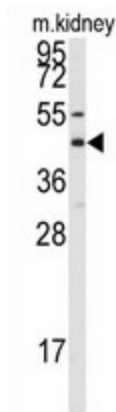
GJA8 is an integral membrane protein that belongs to the connexin family, alpha-type (group II) subfamily. One gap junction consists of a cluster of closely packed pairs of transmembrane channels, the connexons, through which materials of low MW diffuse from one cell to a neighboring cell. A connexon is composed of a hexamer of connexins. This particular connexin only forms junctional channels. GJA8 is expressed in the eye lens, and defects in GJA8 are the cause of zonular pulverulent cataract type 1 (CZP1), a form of autosomal dominant congenital cataract.

**Synonyms:**

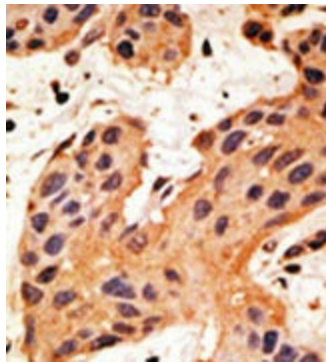
Gap junction alpha-8 protein, Connexin-50, Lens fiber protein MP70

**Note:**

Molecular weight: 48097 Da

**Product images:**

Western blot analysis of anti-GJA8 (C-term) in mouse kidney tissue lysates (35 ug/lane). GJA8 (arrow) was detected using the purified Pab.



Formalin-fixed and paraffin-embedded human breast carcinoma reacted with the primary antibody, which was peroxidase-conjugated to the secondary antibody, followed by DAB staining. This data demonstrates the use of this antibody for immunohistochemistry; clinical relevance has not been evaluated.