

## Product datasheet for **AP11578PU-N**

### GJB6 (N-term) Rabbit Polyclonal Antibody

#### Product data:

|                       |  |
|-----------------------|--|
| Product Type:         | Primary Antibodies   |
| Applications:         | IHC, WB  |
| Recommended Dilution: | <b>ELISA:</b> 1/1,000.<br><b>Western blot:</b> 1/100-1/500.<br><b>Immunohistochemistry on Paraffin Sections:</b> 1/50-1/100. |
| Reactivity:           | Human  |
| Host:                 | Rabbit   |
| Isotype:              | Ig   |
| Clonality:            | Polyclonal   |
| Immunogen:            | KLH conjugated synthetic peptide between 95~124 amino acids from the N-terminal region of Human GJB6.                        |
| Specificity:          | This antibody detects GJB6 at N-term.  |
| Formulation:          | PBS with 0.09% (W/V) Sodium Azide as preservative<br>State: Purified<br>State: Liquid purified Ig fraction                   |
| Concentration:        | lot specific   |
| Purification:         | Protein G column, eluted with high and low pH buffers and neutralized immediately, followed by dialysis against PBS          |
| Conjugation:          | Unconjugated   |
| Storage:              | Store undiluted at 2-8°C for one month or (in aliquots) at -20°C for longer.<br>Avoid repeated freezing and thawing.         |
| Stability:            | Shelf life: one year from despatch.  |
| Gene Name:            | gap junction protein beta 6  |
| Database Link:        | <a href="#">Entrez Gene 10804 Human O95452</a>   |



[View online »](#)

**Background:**

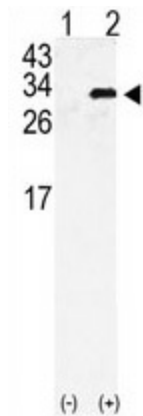
Gap junctions are conduits that allow the direct cell-to-cell passage of small cytoplasmic molecules, including ions, metabolic intermediates, and second messengers, and thereby mediate intercellular metabolic and electrical communication. Gap junction channels consist of connexin protein subunits, which are encoded by a multigene family. GJBs (gap-junction proteins or connexins) play crucial functional roles associated with these channels. Mutations in GJB2 are associated with genetically derived hearing impairments, including autosomal dominant, bilateral, middle to high frequency hearing loss.

**Synonyms:**

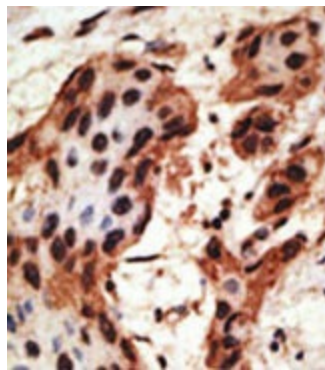
Gap junction beta-6 protein, Connexin-30

**Note:**

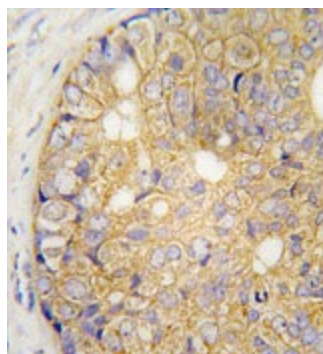
Molecular weight: 30387 Da

**Product images:**


Western blot analysis of GJB6 (arrow) using rabbit polyclonal GJB6 Antibody (N-term). 293 cell lysates (2 ug/lane) either nontransfected (Lane 1) or transiently transfected with the GJB6 gene (Lane 2) (Origene Technologies).



Formalin-fixed and paraffin-embedded human breast carcinoma reacted with the primary antibody, which was peroxidase-conjugated to the secondary antibody, followed by AEC staining. This data demonstrates the use of this antibody for immunohistochemistry; clinical relevance has not been evaluated.



Formalin-fixed and paraffin-embedded human prostate carcinoma tissue reacted with GJB6 Antibody (N-term), which was peroxidase-conjugated to the secondary antibody, followed by DAB staining. This data demonstrates the use of this antibody for immunohistochemistry; clinical relevance has not been evaluated.