

Product datasheet for **AP11576PU-N**

GJA5 (N-term) Rabbit Polyclonal Antibody

Product data:

Product Type:	Primary Antibodies
Applications:	IHC, WB
Recommended Dilution:	ELISA 1:1,000. Western blot 1:100 - 1:500. Immunohistochemistry 1:10 - 1:50.
Reactivity:	Human
Host:	Rabbit
Isotype:	Ig
Clonality:	Polyclonal
Immunogen:	This antibody is generated from rabbits immunized with a KLH conjugated synthetic peptide selected from the N-terminal region of human GJA5.
Specificity:	This antibody detects Connexin 40 (GJA5) at N-term.
Formulation:	PBS with 0.09% (W/V) sodium azide State: Purified State: Liquid Ig fraction
Concentration:	lot specific
Purification:	Protein G column, eluted with high and low pH buffers and neutralized immediately, followed by dialysis against PBS
Conjugation:	Unconjugated
Storage:	Store the antibody at 2 - 8 °C up to one month or (in aliquots) at -20 °C for longer. Avoid repeated freezing and thawing.
Stability:	Shelf life: one year from despatch.
Gene Name:	gap junction protein alpha 5
Database Link:	Entrez Gene 2702 Human P36382

[View online »](#)

Background:

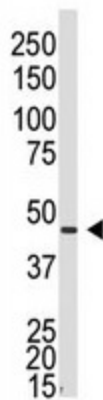
Gap junctions were first characterized by electron microscopy as regionally specialized structures on plasma membranes of contacting adherent cells. These structures were shown to consist of cell-to-cell closely packed transmembrane channels. Proteins, called connexins, purified from fractions of enriched gap junctions from different tissues differ. Connexins are designated by their molecular mass. Another system of nomenclature divides gap junction proteins into 2 categories, alpha and beta, according to sequence similarities at the nucleotide and amino acid levels. For example, CX43 is designated alpha-1 gap junction protein, whereas CX32 and CX26 are called beta-1 and beta-2 gap junction proteins, respectively. This nomenclature emphasizes that CX32 and CX26 are more homologous to each other than either of them is to CX43. Connexins have four transmembrane, three intracellular, and two extracellular regions. Different tissues express different connexins, though tissue specificities overlap, and a given tissue or cell can express several different connexins. Developmental regulation of at least some of the connexin genes has been found. Embryo implantation is regulated in part by temporally changing patterns of expression of connexins in the embryo and the maternal decidua.

Synonyms:

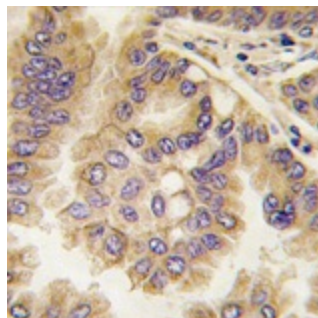
Gap junction alpha-5 protein, Connexin-40

Note:

Molecular weight: 40249 Da

Product images:


Western blot analysis of anti-GJA5 N-term in Placenta lysate. GJA5 (Arrow) was detected using purified Pab. Secondary HRP-anti-rabbit was used for signal visualization with chemiluminescence.



Formalin-fixed and paraffin-embedded human lung carcinoma tissue reacted with GJA5 antibody (N-term), which was peroxidase-conjugated to the secondary antibody, followed by DAB staining. This data demonstrates the use of this antibody for immunohistochemistry; clinical relevance has not been evaluated.