

## Product datasheet for **AP11568PU-N**

### **GJA1 (N-term) Rabbit Polyclonal Antibody**

#### **Product data:**

<b>Product Type:</b>	Primary Antibodies
<b>Applications:</b>	IHC, WB
<b>Recommended Dilution:</b>	ELISA 1:1,000. Western blot 1:1000. Immunohistochemistry 1:50 - 1:100.
<b>Reactivity:</b>	Human
<b>Host:</b>	Rabbit
<b>Isotype:</b>	Ig
<b>Clonality:</b>	Polyclonal
<b>Immunogen:</b>	This antibody is generated from rabbits immunized with a KLH conjugated synthetic peptide selected between 107-138 aa from the N-terminal region of human GJA1.
<b>Specificity:</b>	This antibody detects Connexin 43 (GJA1) at N-term.
<b>Formulation:</b>	PBS with 0.09% (W/V) sodium azide State: Purified State: Liquid Ig fraction
<b>Concentration:</b>	lot specific
<b>Purification:</b>	Protein G column, eluted with high and low pH buffers and neutralized immediately, followed by dialysis against PBS
<b>Conjugation:</b>	Unconjugated
<b>Storage:</b>	Store the antibody at 2 - 8 °C up to one month or (in aliquots) at -20 °C for longer. Avoid repeated freezing and thawing.
<b>Stability:</b>	Shelf life: one year from despatch.
<b>Gene Name:</b>	gap junction protein alpha 1
<b>Database Link:</b>	<a href="#">Entrez Gene 2697 Human P17302</a>



[View online »](#)

**Background:**

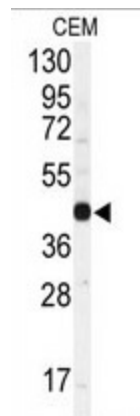
Gap junction protein, alpha 1 is a member of the connexin gene family and a component of gap junctions. Gap junctions are composed of arrays of intercellular channels and provide a route for the diffusion of materials of low molecular weight from cell to cell. Connexin 43 is the major protein of gap junctions in the heart, and gap junctions are thought to have a crucial role in the synchronized contraction of the heart and in embryonic development. Connexin 43 is targeted by several protein kinases that regulate myocardial cell-cell coupling. A related intron-less connexin 43 pseudogene, GJA1P, has been mapped to chromosome 5.

**Synonyms:**

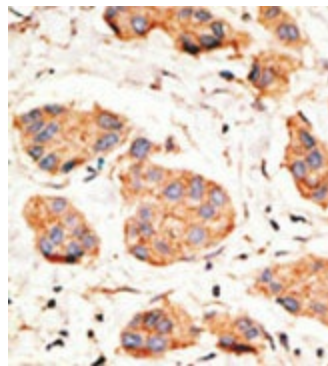
Gap junction alpha-1 protein, Connexin-43, GJAL

**Note:**

Molecular weight: 42877 Da

**Product images:**

Western blot analysis of anti-GJA1 Antibody (N-term) in CEM cell line lysates (35 ug/lane). GJA1 (arrow) was detected using the purified Pab.



Formalin-fixed and paraffin-embedded human breast carcinoma reacted with the primary antibody, which was peroxidase-conjugated to the secondary antibody, followed by DAB staining. This data demonstrates the use of this antibody for immunohistochemistry; clinical relevance has not been evaluated.