

Product datasheet for **AP11559PU-N**

DKKL1 (C-term) Rabbit Polyclonal Antibody

Product data:

Product Type:	Primary Antibodies
Applications:	IHC, WB
Recommended Dilution:	ELISA 1:1,000. Western blot 1:100 - 1:500. Immunohistochemistry 1:50 - 1:100.
Reactivity:	Human, Mouse
Host:	Rabbit
Isotype:	Ig
Clonality:	Polyclonal
Immunogen:	This antibody is generated from rabbits immunized with a KLH conjugated synthetic peptide selected from the C-terminal region of human DKKL1.
Specificity:	This antibody detects DKKL1 at C-term.
Formulation:	PBS with 0.09% (W/V) sodium azide State: Purified State: Liquid Ig fraction
Concentration:	lot specific
Purification:	Protein G column, eluted with high and low pH buffers and neutralized immediately, followed by dialysis against PBS
Conjugation:	Unconjugated
Storage:	Store the antibody at 2 - 8 °C up to one month or (in aliquots) at -20 °C for longer. Avoid repeated freezing and thawing.
Stability:	Shelf life: one year from despatch.
Gene Name:	dickkopf like acrosomal protein 1
Database Link:	Entrez Gene 27120 Human Q9UK85



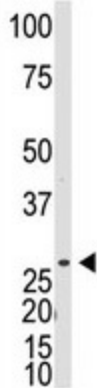
[View online »](#)

Background: The dickkopf protein family interacts with the Wnt signaling pathway and its members are characterized by two conserved cysteine-rich domains. This gene encodes a secreted protein that has high similarity to the N-terminus of the dickkopf-3 protein and moderate similarity to that protein's C-terminus though the C-terminal cysteine residues are not conserved.

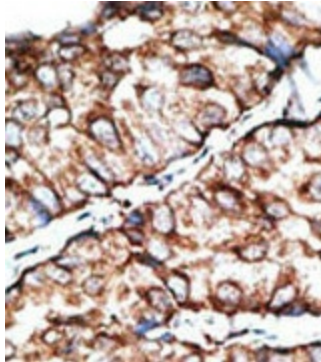
Synonyms: DKKL1, SGY1, Protein soggy-1, CT34

Note: Molecular weight: 27007 Da

Product images:



The anti-DKKL1 C-term is used in Western blot to detect DKKL1 in mouse testis tissue lysate.



Formalin-fixed and paraffin-embedded human breast carcinoma reacted with the primary antibody, which was peroxidase-conjugated to the secondary antibody, followed by DAB staining. This data demonstrates the use of this antibody for immunohistochemistry; clinical relevance has not been evaluated.