

## Product datasheet for **AP11534PU-N**

### TLR5 (N-term) Rabbit Polyclonal Antibody

#### Product data:

Product Type:	Primary Antibodies
Applications:	IHC, WB
Recommended Dilution:	ELISA 1:1,000. Western blot 1:100 - 1:500. Immunohistochemistry 1:50 - 1:100.
Reactivity:	Human, Mouse
Host:	Rabbit
Isotype:	Ig
Clonality:	Polyclonal
Immunogen:	This antibody is generated from rabbits immunized with a KLH conjugated synthetic peptide selected from the N-terminal region of mouse TLR5.
Specificity:	This antibody detects TLR5 at N-term.
Formulation:	PBS with 0.09% (W/V) sodium azide State: Purified State: Liquid Ig fraction
Concentration:	lot specific
Purification:	Protein G column, eluted with high and low pH buffers and neutralized immediately, followed by dialysis against PBS
Conjugation:	Unconjugated
Storage:	Store the antibody at 2 - 8 °C up to one month or (in aliquots) at -20 °C for longer. Avoid repeated freezing and thawing.
Stability:	Shelf life: one year from despatch.
Gene Name:	toll like receptor 5
Database Link:	<a href="#">Entrez Gene 7100 Human O60602</a>



[View online »](#)

**Background:**

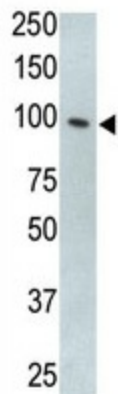
TLR5, a Type I membrane protein belonging to the Toll-like receptor family, participates in the innate immune response to microbial agents. It also plays a role in mediating detection of bacterial flagellins. TLR5 acts via MyD88 and TRAF6, leading to NF-kappa-B activation, cytokine secretion and the inflammatory response. This protein binds to TIRAP and MyD88 via their respective TIR domains. TLR5 is highly expressed in liver, and is detected in lung and at very low levels in most other tissues. The TLR5 gene lies in a locus that is associated with susceptibility to Salmonella. Inbred strains of mice can be classified into 3 categories according to their resistance to infection with *S.typhimurium*: susceptible (BALB/c, C57BL/6, C3H/He), intermediate (DBA/2, C75L) and resistant (A, CBA). The strain MOLF/Ei is highly susceptible to the infection, has a unique TLR5 haplotype and a lower expression of TLR5.

**Synonyms:**

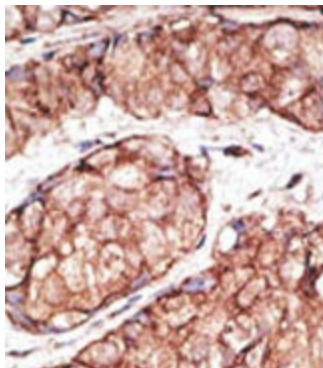
Toll-like receptor 5, TIL3

**Note:**

Molecular weight: 97626 Da

**Product images:**

The anti-mTLR5 Pab is used in Western blot to detect TLR5 in HL60 cell lysate



Formalin-fixed and paraffin-embedded human breast carcinoma reacted with the primary antibody, which was peroxidase-conjugated to the secondary antibody, followed by AEC staining. This data demonstrates the use of this antibody for immunohistochemistry; clinical relevance has not been evaluated.