

Product datasheet for **AP11532PU-N**

Tlr4 (N-term) Rabbit Polyclonal Antibody

Product data:

Product Type:	Primary Antibodies
Applications:	IHC, WB
Recommended Dilution:	ELISA: 1/1,000. Western blot: 1/100 - 1/500. Immunohistochemistry: 1/50 - 1/100.
Reactivity:	Mouse
Host:	Rabbit
Isotype:	Ig
Clonality:	Polyclonal
Immunogen:	This antibody is generated from rabbits immunized with a KLH conjugated synthetic peptide selected from the N-terminal region of mouse TLR4.
Specificity:	This antibody detects TLR4 at N-term.
Formulation:	PBS with 0.09% (W/V) sodium azide State: Purified State: Liquid purified Ig fraction
Concentration:	lot specific
Purification:	Protein G column, eluted with high and low pH buffers and neutralized immediately, followed by dialysis against PBS
Conjugation:	Unconjugated
Storage:	Store the antibody at 2 - 8 °C up to one month or (in aliquots) at -20 °C for longer. Avoid repeated freezing and thawing.
Stability:	Shelf life: one year from despatch.
Gene Name:	toll-like receptor 4
Database Link:	Entrez Gene 21898 Mouse Q9QUK6



[View online »](#)

Background:

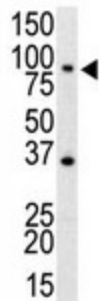
TLR4, a type I membrane protein that belongs to the Toll-like receptor family, cooperates with LY96 and CD14 to mediate the innate immune response to bacterial lipopolysaccharide (LPS). It acts via MyD88, TIRAP and TRAF6, leading to NF-kappa-B activation, cytokine secretion and the inflammatory response. TLR4 belongs to the lipopolysaccharide (LPS) receptor, a multi-protein complex containing at least CD14, LY96 and TLR. TLR4 binds to LY96 via the extracellular domain, and to MyD88 and TIRAP via their respective TIR domains. The protein contains 19 leucine-rich (LRR) repeats, and it is highly expressed in heart, spleen, lung and muscle. Lower levels are found in liver and kidney. Interstrain analyses reveal that TLR4 is a polymorphic protein and that the extracellular domain is far more variable than the cytoplasmic domain, which is variable at the C-terminal.

Synonyms:

Toll-like receptor 4

Note:

Molecular weight: 95518 Da

Product images:

Western blot analysis of anti-mTLR4 Pab in mouse spleen cell lysate. mTLR4 (arrow) was detected using purified Pab. Secondary HRP-anti-rabbit was used for signal visualization with chemiluminescence.