

Product datasheet for **AP11505PU-N**

ACTC1 (N-term) Rabbit Polyclonal Antibody

Product data:

Product Type:	Primary Antibodies
Applications:	IHC, WB
Recommended Dilution:	ELISA 1:1,000. Western blot 1:50 - 1:100. Immunohistochemistry 1:10 - 1:50.
Reactivity:	Human, Mouse
Host:	Rabbit
Isotype:	Ig
Clonality:	Polyclonal
Immunogen:	This antibody is generated from rabbits immunized with a KLH conjugated synthetic peptide selected from the N-terminal region of human ACTB/ACTC.
Specificity:	This antibody detects Actin (ACTB/ACTC) at N-term.
Formulation:	PBS with 0.09% (W/V) sodium azide State: Purified State: Liquid Ig fraction
Concentration:	lot specific
Purification:	Prepared by Saturated Ammonium Sulfate (SAS) precipitation followed by dialysis against PBS.
Conjugation:	Unconjugated
Storage:	Store the antibody at 2 - 8 °C up to one month or (in aliquots) at -20 °C for longer. Avoid repeated freezing and thawing.
Stability:	Shelf life: one year from despatch.
Gene Name:	actin, alpha, cardiac muscle 1
Database Link:	Entrez Gene 70 Human P68032



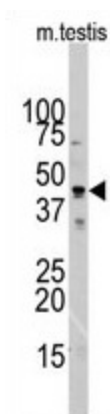
[View online »](#)

Background: Actins are highly conserved proteins that are involved in cell motility, structure, and integrity. ACTB/ACTC are nonmuscle cytoskeletal actins and major constituents of the contractile apparatus. Defects in ACTB are a cause of juvenile-onset dystonia. Defects in ACTC have been associated with idiopathic dilated cardiomyopathy (IDC) and familial hypertrophic cardiomyopathy (FHC).

Synonyms: ACTC; ASD5; CMD1R; CMH11

Note: Predicted to cross react with rat und zebrafish.
Molecular weight: 41737 Da / 42019 Da

Product images:



Western blot analysis of ACTB/ACTC Antibody (N-term) in mouse testis tissue lysates (35 ug/lane). Target protein (arrow) was detected using the purified Pab (1:60 dilution).