

## Product datasheet for **AP11502PU-N**

### SLC2A2 (N-term) Rabbit Polyclonal Antibody

#### Product data:

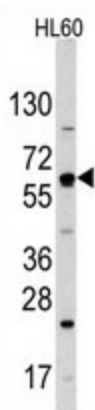
Product Type:	Primary Antibodies
Applications:	WB
Recommended Dilution:	ELISA 1:1,000. Western blot 1:50 - 1:100.
Reactivity:	Human
Host:	Rabbit
Isotype:	Ig
Clonality:	Polyclonal
Immunogen:	This antibody is generated from rabbits immunized with a KLH conjugated synthetic peptide selected from the N-terminal region of human SLC2A2.
Specificity:	This antibody detects GLUT2 (SLC2A2) at N-term.
Formulation:	PBS with 0.09% (W/V) sodium azide State: Purified State: Liquid Ig fraction
Concentration:	lot specific
Purification:	Protein A column, eluted with high and low pH buffers and neutralized immediately, followed by dialysis against PBS
Conjugation:	Unconjugated
Storage:	Store the antibody at 2 - 8 °C up to one month or (in aliquots) at -20 °C for longer. Avoid repeated freezing and thawing.
Stability:	Shelf life: one year from despatch.
Gene Name:	solute carrier family 2 member 2
Database Link:	<a href="#">Entrez Gene 6514 Human P11168</a>
Background:	Glucose transporter 2 isoform is an integral plasma membrane glycoprotein of the liver, islet beta cells, intestine, and kidney epithelium. It mediates facilitated bidirectional glucose transport. Because of its low affinity for glucose, it has been suggested as a glucose sensor.
Synonyms:	GLUT-2, Glucose transporter 2, Glucose transporter type 2 liver



[View online »](#)

Note: Molecular weight: 57359 Da

### Product images:



Western blot analysis of SLC2A2 Antibody (N-term) in HL60 cell line lysates (35 ug/lane). SLC2A2 (arrow) was detected using the purified Pab (1:60 dilution).