

Product datasheet for **AP11496PU-N**

LIN28B Rabbit Polyclonal Antibody

Product data:

Product Type:	Primary Antibodies
Applications:	FC, IF, IHC, WB
Recommended Dilution:	Western blot: 1/1000. Flow Cytometry: 1/10-1/50. Immunofluorescence: 1/10-1/50. Immunohistochemistry on Paraffin Sections: 1/10-1/50.
Reactivity:	Human, Mouse
Host:	Rabbit
Isotype:	Ig
Clonality:	Polyclonal
Immunogen:	KLH conjugated synthetic peptide between 95-128 amino acids from the Central region of Human LIN28B.
Specificity:	This antibody detects LIN28B at center.
Formulation:	PBS State: Aff - Purified State: Liquid purified Ig fraction Preservative: 0.09% (W/V) Sodium Azide
Concentration:	lot specific
Purification:	Purified by Protein A column followed by peptide affinity purification.
Conjugation:	Unconjugated
Storage:	Store undiluted at 2-8°C for one month or (in aliquots) at -20°C for longer. Avoid repeated freezing and thawing.
Stability:	Shelf life: one year from despatch.
Predicted Protein Size:	26953 Da
Gene Name:	lin-28 homolog B
Database Link:	Entrez Gene 389421 Human Q6ZN17



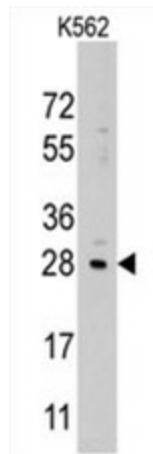
[View online »](#)

Background:

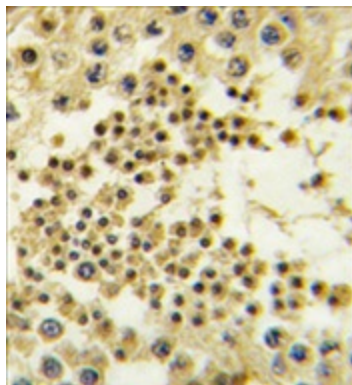
Lin-28 homolog B (LIN28B) is overexpressed in hepatocellular carcinoma. The heterochronic gene *lin-28* is a key regulator of developmental timing in the nematode *Caenorhabditis elegans*. Similar with *lin-28* proteins, LIN28B conserves a cold shock domain and a pair of CCHC zinc finger domains. Phylogenetic analysis suggests that they might arise as a result of duplication from an ancestral gene. Overexpression of LIN28B was noted in most HCC cell lines and clinical samples. A short LIN28B isoform was also identified in non-tumor liver tissue and fetal liver. Although predominantly localized in the cytoplasm, LIN28B protein shows cell cycle-dependent nuclear translocation in Huh7 cells. Induced expression of exogenous LIN28B in a tet-off cell line promoted cancer cell proliferation.

Synonyms:

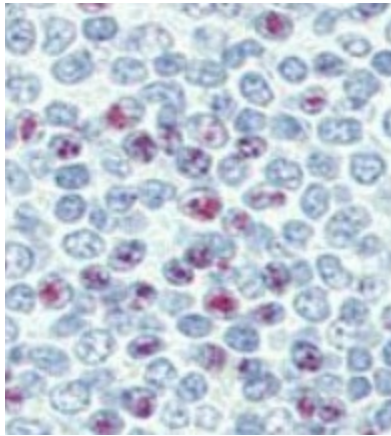
LIN28B, CSDD2, Lin-28 homolog B

Product images:

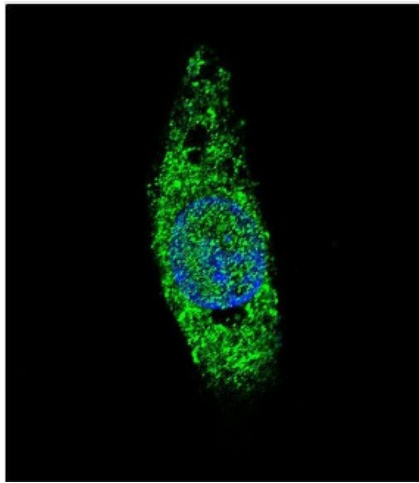
Western blot analysis of anti-LIN28B antibody in K562 cell line lysates (35 ug/lane). LIN28B (arrow) was detected using the purified Pab (1:60 dilution).



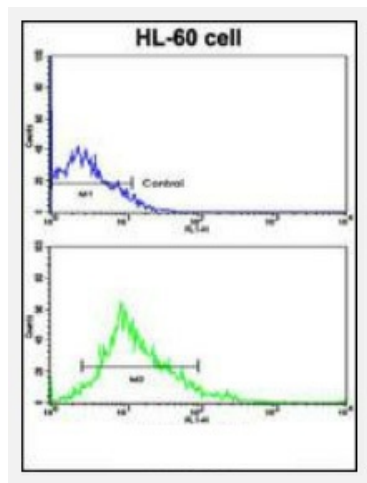
Formalin-fixed and paraffin-embedded human testis tissue reacted with LIN28B antibody (Center), which was peroxidase-conjugated to the secondary antibody, followed by DAB staining. This data demonstrates the use of this antibody for immunohistochemistry; clinical relevance has not been evaluated.



Formalin-fixed and paraffin-embedded human Spleen tissue reacted with LIN28B antibody (Center), which was peroxidase-conjugated to the secondary antibody, followed by AEC staining. This data demonstrates the use of this antibody for immunohistochemistry; clinical relevance has not been evaluated.



Confocal immunofluorescent analysis of LIN28B antibody (Center) with HepG2 cell followed by Alexa Fluor 488-conjugated goat anti-rabbit IgG (green). DAPI was used to stain the cell nuclear (blue).



Flow Cytometric analysis of HL-60 cells using LIN28B antibody (Center) (bottom histogram) compared to a negative control cell (top histogram). FITC-conjugated goat-anti-rabbit secondary antibodies were used for the analysis.