

Product datasheet for **AP11466PU-N**

Cadherin 7 (CDH7) (N-term) Rabbit Polyclonal Antibody

Product data:

| | |
|-----------------------|---|
| Product Type: | Primary Antibodies |
| Applications: | FC, IHC, WB |
| Recommended Dilution: | ELISA: 1/1,000. Western blot: 1/50-1-/100. Immunohistochemistry: 1/10-1/50. Flow Cytometry: 1/10-1/50. |
| Reactivity: | Human |
| Host: | Rabbit |
| Isotype: | Ig |
| Clonality: | Polyclonal |
| Immunogen: | This antibody is generated from rabbits immunized with a KLH conjugated synthetic peptide between 63~92 amino acids from the N-term region of human CDH7. |
| Specificity: | This antibody detects Cadherin 7 (N-term). |
| Formulation: | PBS with 0.09% (W/V) sodium azide State: Aff - Purified State: Liquid purified Ig fraction |
| Concentration: | lot specific |
| Purification: | Protein A Chromatography, followed by peptide affinity purification |
| Conjugation: | Unconjugated |
| Storage: | Store the antibody undiluted at 2-8°C for one month or (in aliquots) at -20 °C for longer. Avoid repeated freezing and thawing. |
| Stability: | Shelf life: one year from despatch. |
| Gene Name: | cadherin 7 |
| Database Link: | Entrez Gene 1005 Human Q9ULB5 |



[View online »](#)

Background:

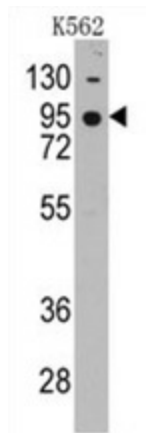
CDH7 is a type II classical cadherin from the cadherin superfamily. This protein is a calcium dependent cell-cell adhesion glycoprotein comprised of five extracellular cadherin repeats, a transmembrane region and a highly conserved cytoplasmic tail. Type II (atypical) cadherins are defined based on their lack of a HAV cell adhesion recognition sequence specific to type I cadherins. Cadherins mediate cell-cell binding in a homophilic manner, contributing to the sorting of heterogeneous cell types and the maintenance of orderly structures.

Synonyms:

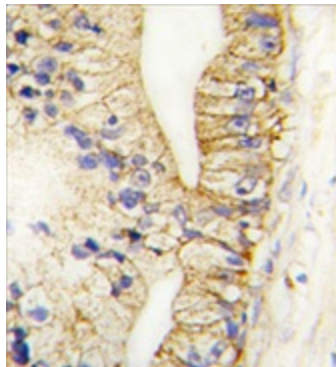
CDH7, CDH7L1

Note:

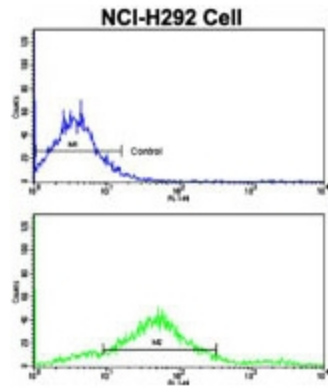
Molecular weight: 87105 Da

Product images:

Western blot analysis of anti-CDH7 Pab in K562 cell line lysates (35 ug/lane). CDH7 (arrow) was detected using the purified Pab (1:60 dilution).



Formalin-fixed and paraffin-embedded human prostate carcinoma tissue reacted with CDH7 antibody (N-term), which was peroxidase-conjugated to the secondary antibody, followed by DAB staining. This data demonstrates the use of this antibody for immunohistochemistry; clinical relevance has not been evaluated.



Flow Cytometric analysis of NCI-H292 cells using Cadherin 7 Antibody (N-term) (bottom histogram) compared to a negative control cell (top histogram). FITC-conjugated goat-anti-rabbit secondary antibodies were used for the analysis.