

Product datasheet for **AP11461PU-N**

ALDH6A1 (N-term) Rabbit Polyclonal Antibody

Product data:

Product Type:	Primary Antibodies
Applications:	IHC, WB
Recommended Dilution:	ELISA 1:1,000. Western blot 1:50 - 1:100. Immunohistochemistry 1:10 - 1:50.
Reactivity:	Human
Host:	Rabbit
Isotype:	Ig
Clonality:	Polyclonal
Immunogen:	KLH conjugated synthetic peptide selected from the N-terminal region of human ALDH6A1
Specificity:	This antibody detects ALDH6A1 at N-term.
Formulation:	PBS with 0.09% (W/V) sodium azide State: Aff - Purified State: Liquid Ig fraction
Concentration:	lot specific
Purification:	Protein A column, followed by peptide affinity purification. The antibody is eluted with high and low pH buffers and neutralized immediately, followed by dialysis against PBS.
Conjugation:	Unconjugated
Storage:	Store the antibody at 2 - 8 °C up to one month or (in aliquots) at -20 °C for longer. Avoid repeated freezing and thawing.
Stability:	Shelf life: one year from despatch.
Gene Name:	aldehyde dehydrogenase 6 family member A1
Database Link:	Entrez Gene 4329 Human Q02252



[View online »](#)

Background:

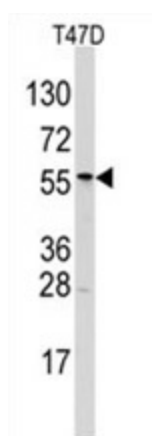
ALDH6A1 belongs to the aldehyde dehydrogenases family of proteins. This enzyme plays a role in the valine and pyrimidine catabolic pathways. This protein is a mitochondrial methylmalonate semialdehyde dehydrogenase, and catalyzes the irreversible oxidative decarboxylation of malonate and methylmalonate semialdehydes to acetyl- and propionyl-CoA. Methylmalonate semialdehyde dehydrogenase deficiency is characterized by elevated beta-alanine, 3-hydroxypropionic acid, and both isomers of 3-amino and 3-hydroxyisobutyric acids in urine organic acids.

Synonyms:

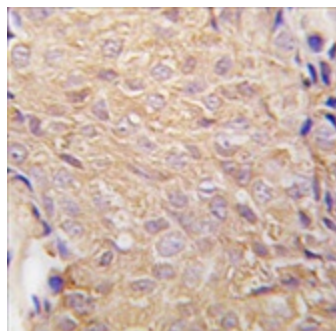
MGC40271; MMSADHA; MMSDH

Note:

Molecular weight: 57858 Da

Product images:

Western blot analysis of ALDH6A1 Antibody (N-term) in T47D cell line lysates (35 ug/lane). ALDH6A1 (arrow) was detected using the purified Pab (1:60 dilution).



Formalin-fixed and paraffin-embedded human breast carcinoma tissue reacted with ALDH6A1 antibody (N-term), which was peroxidase-conjugated to the secondary antibody, followed by DAB staining. This data demonstrates the use of this antibody for immunohistochemistry; clinical relevance has not been evaluated.