

Product datasheet for **AP11453PU-N**

PDE8A (Center) Rabbit Polyclonal Antibody

Product data:

Product Type:	Primary Antibodies
Applications:	IHC, WB
Recommended Dilution:	ELISA 1:1,000. Western blot 1:50 - 1:100. Immunohistochemistry 1:50.
Reactivity:	Human
Host:	Rabbit
Isotype:	Ig
Clonality:	Polyclonal
Immunogen:	This antibody is generated from rabbits immunized with a KLH conjugated synthetic peptide selected from the Center region of human PDE8A.
Specificity:	This antibody detects PDE8A at Center.
Formulation:	PBS with 0.09% (W/V) sodium azide State: Purified State: Liquid Ig fraction
Concentration:	lot specific
Purification:	Protein A column, eluted with high and low pH buffers and neutralized immediately, followed by dialysis against PBS
Conjugation:	Unconjugated
Storage:	Store the antibody at 2 - 8 °C up to one month or (in aliquots) at -20 °C for longer. Avoid repeated freezing and thawing.
Stability:	Shelf life: one year from despatch.
Gene Name:	phosphodiesterase 8A
Database Link:	Entrez Gene 5151 Human O60658



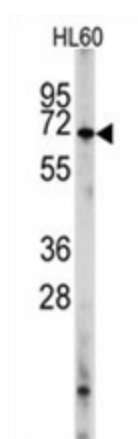
[View online »](#)

Background: PDE8A plays a role in signal transduction by regulating the intracellular concentration of cyclic nucleotides. This phosphodiesterase, which has a high affinity for cAMP, may be involved in maintaining basal levels of the cyclic nucleotide and/or in the cAMP regulation of germ cell development.

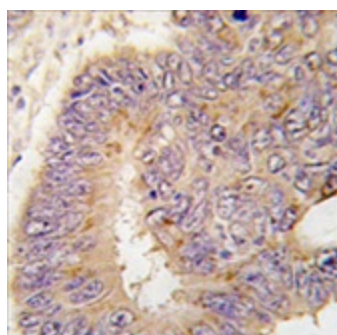
Synonyms: Phosphodiesterase 8A, FLJ16150, HsT19550

Note: Molecular weight: 93173 Da

Product images:



Western blot analysis of PDE8A Antibody (Center) in HL60 cell line lysates (35 ug/lane). PDE8A (arrow) was detected using the purified Pab (1:60 dilution).



Formalin-fixed and paraffin-embedded human colon carcinoma tissue reacted with PDE8A antibody (Center), which was peroxidase-conjugated to the secondary antibody, followed by DAB staining. This data demonstrates the use of this antibody for immunohistochemistry; clinical relevance has not been evaluated.