

Product datasheet for **AP11442PU-N**

TRAPPC4 (N-term) Rabbit Polyclonal Antibody

Product data:

Product Type:	Primary Antibodies
Applications:	IHC, WB
Recommended Dilution:	ELISA 1:1,000. Western blotting 1:50 - 1:100. Immunohistochemistry 1:10 - 1:50.
Reactivity:	Human
Host:	Rabbit
Isotype:	Ig
Clonality:	Polyclonal
Immunogen:	This antibody is generated from rabbits immunized with a KLH conjugated synthetic peptide selected from the N-terminal region of human TRAPPC4.
Specificity:	This antibody detects TRAPPC4 at N-term.
Formulation:	PBS with 0.09% (W/V) sodium azide State: Purified State: Liquid Ig fraction
Concentration:	lot specific
Purification:	Protein A column, eluted with high and low pH buffers and neutralized immediately, followed by dialysis against PBS.
Conjugation:	Unconjugated
Storage:	Store the antibody at 2 - 8 °C up to one month or (in aliquots) at -20 °C for longer. Avoid repeated freezing and thawing.
Stability:	Shelf life: one year from despatch.
Gene Name:	trafficking protein particle complex 4
Database Link:	Entrez Gene 51399 Human Q9Y296
Background:	TRAPPC4 is part of the multisubunit TRAPP (transport protein particle) complex and interacts with SDC2. It may play a role in vesicular transport from endoplasmic reticulum to Golgi. TRAPP proteins are involved in tethering during vesicle transport.

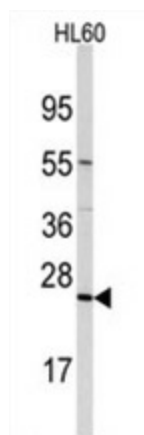


[View online »](#)

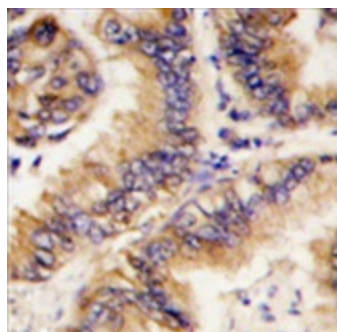
Synonyms: Synbindin, SBDN

Note: Molecular weight: 24209 Da

Product images:



Western blot analysis of anti-TRAPPC4 Pab (1:60 dilution).



Formalin-fixed and paraffin-embedded human lung carcinoma tissue reacted with TRAPPC4 antibody (N-term), which was peroxidase-conjugated to the secondary antibody, followed by DAB staining. This data demonstrates the use of this antibody for immunohistochemistry; clinical relevance has not been evaluated.