

Product datasheet for **AP11437PU-N**

EPM2A (C-term) Rabbit Polyclonal Antibody

Product data:

Product Type:	Primary Antibodies
Applications:	IHC, WB
Recommended Dilution:	ELISA 1:1,000. Western blot 1:50 - 1:100. Immunohistochemistry 1:10 - 1:50.
Reactivity:	Human
Host:	Rabbit
Isotype:	Ig
Clonality:	Polyclonal
Immunogen:	This antibody is generated from rabbits immunized with a KLH conjugated synthetic peptide selected from the C-terminal region of human EPM2A.
Specificity:	This antibody detects EPM2A at C-term.
Formulation:	PBS with 0.09% (W/V) sodium azide State: Purified State: Liquid Ig fraction
Concentration:	lot specific
Purification:	Protein A column, eluted with high and low pH buffers and neutralized immediately, followed by dialysis against PBS
Conjugation:	Unconjugated
Storage:	Store the antibody at 2 - 8 °C up to one month or (in aliquots) at -20 °C for longer. Avoid repeated freezing and thawing.
Stability:	Shelf life: one year from despatch.
Gene Name:	epilepsy, progressive myoclonus type 2A, Lafora disease (laforin)
Database Link:	Entrez Gene 7957 Human O95278
Background:	EPM2A is a dual-specificity phosphatase that associates with polyribosomes. The encoded protein may be involved in the regulation of glycogen metabolism. Mutations have been associated with myoclonic epilepsy of Lafora.

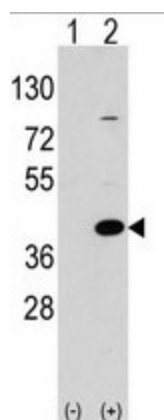


[View online »](#)

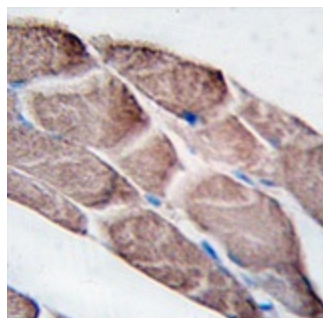
Synonyms: EPM2A, Laforin, EC=3.1.3.48, EC=3.1.3.16, Lafora PTPase, LAFPTPase

Note: Molecular weight: 37158 Da

Product images:



Western blot analysis of EPM2A (arrow) using rabbit polyclonal EPM2A Antibody (C-term). 293 cell lysates (2 ug/lane) either nontransfected (Lane 1) or transiently transfected with the EPM2A gene (Lane 2) (Origene Technologies).



Formalin-fixed and paraffin-embedded human skeletal muscle tissue reacted with EPM2A antibody (C-term), which was peroxidase-conjugated to the secondary antibody, followed by DAB staining. This data demonstrates the use of this antibody for immunohistochemistry; clinical relevance has not been evaluated.