

Product datasheet for **AP11429PU-N**

Proteasome 20S alpha 5 (PSMA5) (Center) Rabbit Polyclonal Antibody

Product data:

Product Type:	Primary Antibodies
Applications:	IHC, WB
Recommended Dilution:	ELISA 1:1,000. Western blot 1:50 - 1:100. Immunohistochemistry 1:10 - 1:50.
Reactivity:	Human
Host:	Rabbit
Isotype:	Ig
Clonality:	Polyclonal
Immunogen:	This antibody is generated from rabbits immunized with a KLH conjugated synthetic peptide selected from the center region of human PSMA5.
Specificity:	This antibody detects PSMA5 at center.
Formulation:	PBS with 0.09% (W/V) sodium azide State: Purified State: Liquid Ig fraction
Concentration:	lot specific
Purification:	Protein A column, eluted with high and low pH buffers and neutralized immediately, followed by dialysis against PBS
Conjugation:	Unconjugated
Storage:	Store the antibody at 2 - 8 °C up to one month or (in aliquots) at -20 °C for longer. Avoid repeated freezing and thawing.
Stability:	Shelf life: one year from despatch.
Gene Name:	proteasome subunit alpha 5
Database Link:	Entrez Gene 5686 Human P28066



[View online »](#)

Background:

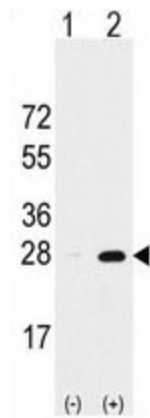
The proteasome is a multicatalytic proteinase complex with a highly ordered ring-shaped 20S core structure. The core structure is composed of 4 rings of 28 non-identical subunits; 2 rings are composed of 7 alpha subunits and 2 rings are composed of 7 beta subunits. Proteasomes are distributed throughout eukaryotic cells at a high concentration and cleave peptides in an ATP/ubiquitin-dependent process in a non-lysosomal pathway. An essential function of a modified proteasome, the immunoproteasome, is the processing of class I MHC peptides. PMA5 is a member of the peptidase T1A family, that is a 20S core alpha subunit.

Synonyms:

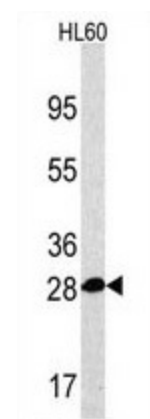
Proteasome subunit alpha type-5, Proteasome 20S alpha 5, Macropain zeta chain, Proteasome zeta chain

Note:

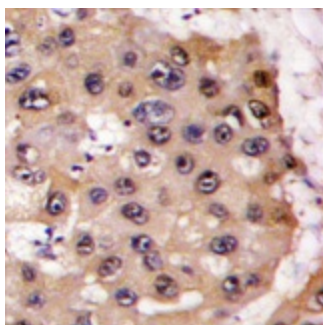
Molecular weight: 26411 Da

Product images:


Western blot analysis of PSMA5 (arrow) using rabbit polyclonal PSMA5 Antibody (Center). 293 cell lysates (2 ug/lane) either nontransfected (Lane 1) or transiently transfected with the PSMA5 gene (Lane 2) (Origene Technologies).



Western blot analysis of PSMA5 Antibody (Center) in HL60 cell line lysates (35 ug/lane). PSMA5 (arrow) was detected using the purified polyclonal antibody.



Formalin-fixed and paraffin-embedded human hepatocarcinoma tissue reacted with PSMA5 antibody (Center), which was peroxidase-conjugated to the secondary antibody, followed by DAB staining. This data demonstrates the use of this antibody for immunohistochemistry; clinical relevance has not been evaluated.