

## Product datasheet for **AP11412PU-N**

### LOC100288966 (C-term) Rabbit Polyclonal Antibody

#### Product data:

Product Type:	Primary Antibodies
Applications:	IHC
Recommended Dilution:	ELISA 1:1,000. Immunohistochemistry 1:10 – 1:50.
Reactivity:	Human
Host:	Rabbit
Isotype:	Ig
Clonality:	Polyclonal
Immunogen:	This antibody is generated from rabbits immunized with a KLH conjugated synthetic peptide selected from the C-terminal region of human POTE.
Specificity:	This antibody detects POTE at C-term.
Formulation:	PBS with 0.09% (W/V) sodium azide State: Aff – Purified State: Liquid Ig fraction
Concentration:	lot specific
Purification:	Protein A column, followed by peptide affinity purification
Conjugation:	Unconjugated
Storage:	Store the antibody at 2 – 8 °C up to one month or (in aliquots) at -20 °C for longer. Avoid repeated freezing and thawing.
Stability:	Shelf life: one year from despatch.
Gene Name:	POTE ankyrin domain family member D-like
Database Link:	<a href="#">Entrez Gene 100288966 Human</a> <a href="#">Q86YR6</a>

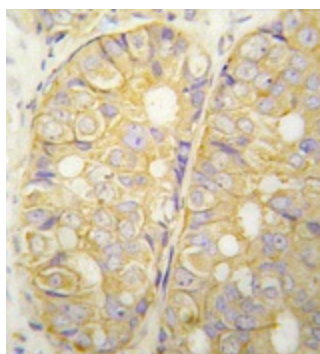


**Background:** The POTE protein contains seven ankyrin repeats between amino acids 140 and 380. Expression of POTE in prostate cancer and its undetectable expression in normal essential tissues make POTE a candidate for the immunotherapy of prostate cancer. The existence of a large number of closely related but rapidly diverging members, their location on multiple chromosomes and their limited expression pattern suggest an important role for the POTE gene family in reproductive processes.

**Synonyms:** POTED, A26B3

**Note:** Molecular weight: 66378 Da

**Product images:**



Formalin-fixed and paraffin-embedded human prostata carcinoma tissue reacted with POTE antibody (C-term), which was peroxidase-conjugated to the secondary antibody, followed by DAB staining. This data demonstrates the use of this antibody for immunohistochemistry; clinical relevance has not been evaluated.