

Product datasheet for **AP11408PU-N**

FRAT1 Rabbit Polyclonal Antibody

Product data:

Product Type:	Primary Antibodies
Applications:	IHC, WB
Recommended Dilution:	ELISA 1:1,000. Western blot 1:50 - 1:100. Immunohistochemistry 1:10 - 1:50´.
Reactivity:	Human
Host:	Rabbit
Isotype:	Ig
Clonality:	Polyclonal
Immunogen:	This antibody is generated from rabbits immunized with a KLH conjugated synthetic peptide selected from the Center region of human FRAT1.
Specificity:	This antibody detects FRAT1 at Center.
Formulation:	PBS with 0.09% (W/V) sodium azide State: Purified State: Liquid Ig fraction
Concentration:	lot specific
Purification:	Prepared by Saturated Ammonium Sulfate (SAS) precipitation followed by dialysis against PBS.
Conjugation:	Unconjugated
Storage:	Store the antibody at 2 - 8 °C up to one month or (in aliquots) at -20 °C for longer. Avoid repeated freezing and thawing.
Stability:	Shelf life: one year from despatch.
Gene Name:	frequently rearranged in advanced T-cell lymphomas 1
Database Link:	Entrez Gene 10023 Human Q92837



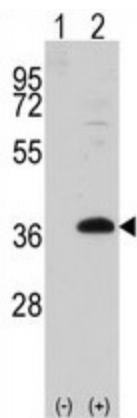
[View online »](#)

Background: FRAT1 belongs to the GSK-3-binding protein family. It may function in tumor progression and in lymphomagenesis. It positively regulates the Wnt signaling pathway by stabilizing beta-catenin through the association with GSK-3. It may play a role in tumor progression and collaborate with PIM1 and MYC in lymphomagenesis.

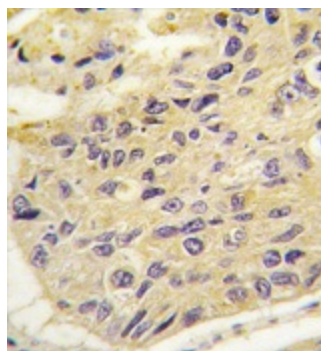
Synonyms: FRAT-1

Note: Molecular weight: 29093 Da

Product images:



Western blot analysis of FRAT1 (arrow) using rabbit polyclonal FRAT1 Antibody (Center).293 cell lysates (2 ug/lane) either nontransfected (Lane 1) or transiently transfected with the FRAT1 gene (Lane 2) (Origene Technologies).



Formalin-fixed and paraffin-embedded human lung carcinoma tissue reacted with FRAT1 antibody (Center), which was peroxidase-conjugated to the secondary antibody, followed by DAB staining. This data demonstrates the use of this antibody for immunohistochemistry; clinical relevance has not been evaluated.