

## Product datasheet for **AP11406PU-N**

### M Cadherin (CDH15) (C-term) Rabbit Polyclonal Antibody

#### Product data:

Product Type:	Primary Antibodies
Applications:	IHC, WB
Recommended Dilution:	ELISA 1:1,000. Western blot 1:50 - 1:100. Immunohistochemistry 1:10 - 1:50.
Reactivity:	Human
Host:	Rabbit
Isotype:	Ig
Clonality:	Polyclonal
Immunogen:	This antibody is generated from rabbits immunized with a KLH conjugated synthetic peptide selected from the C-terminal region of human CDH15.
Specificity:	This antibody detects M Cadherin at C-term.
Formulation:	PBS with 0.09% (W/V) sodium azide State: Aff - Purified State: Liquid Ig fraction
Concentration:	lot specific
Purification:	Protein A column, followed by peptide affinity purification
Conjugation:	Unconjugated
Storage:	Store the antibody at 2 - 8 °C up to one month or (in aliquots) at -20 °C for longer. Avoid repeated freezing and thawing.
Stability:	Shelf life: one year from despatch.
Gene Name:	cadherin 15
Database Link:	<a href="#">Entrez Gene 1013 Human P55291</a>



[View online »](#)

**Background:**

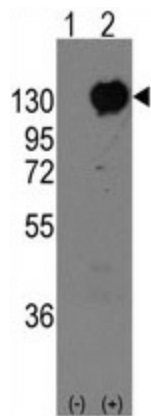
CDH15 is a member of the cadherin superfamily of genes, encoding calcium-dependent intercellular adhesion glycoproteins. Cadherins consist of an extracellular domain containing 5 cadherin domains, a transmembrane region, and a conserved cytoplasmic domain. Transcripts from this particular cadherin are expressed in myoblasts and upregulated in myotubule-forming cells. This protein is thought to be essential for the control of morphogenetic processes, specifically myogenesis, and may provide a trigger for terminal muscle cell differentiation.

**Synonyms:**

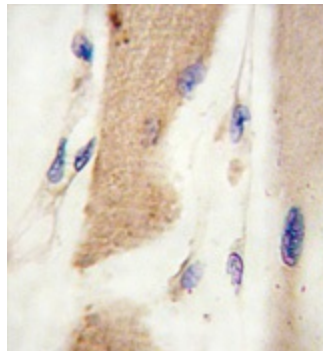
Muscle cadherin, Cadherin-14, CDH15, CDH14, CDH3, Cadherin M, M-Cadherin

**Note:**

Molecular weight: 88916 Da predicted from amino acid sequence. Contains multiple glycosylation sites.

**Product images:**

Western blot analysis of CDH15 (arrow) using rabbit polyclonal CDH15 Antibody (C-term). 293 cell lysates (2 ug/lane) either nontransfected (Lane 1) or transiently transfected with the CDH15 gene (Lane 2) (Origene Technologies).



Formalin-fixed and paraffin-embedded human skeletal muscle tissue reacted with CDH15 antibody (C-term), which was peroxidase-conjugated to the secondary antibody, followed by DAB staining. This data demonstrates the use of this antibody for immunohistochemistry; clinical relevance has not been evaluated.