

## Product datasheet for **AP11393PU-N**

### Evx2 (C-term) Rabbit Polyclonal Antibody

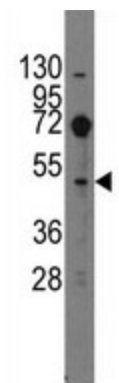
#### Product data:

Product Type:	Primary Antibodies
Applications:	WB
Recommended Dilution:	ELISA 1:1,000. Western blot 1:50 - 1:100.
Reactivity:	Human, Mouse
Host:	Rabbit
Isotype:	Ig
Clonality:	Polyclonal
Immunogen:	KLH conjugated synthetic peptide selected from the C-terminal region of mouse EVX2
Specificity:	This antibody detects Evx2 at C-term.
Formulation:	PBS with 0.09% (W/V) sodium azide State: Aff - Purified State: Liquid Ig fraction
Concentration:	lot specific
Purification:	Protein A column, followed by peptide affinity purification
Conjugation:	Unconjugated
Storage:	Store the antibody at 2 - 8 °C up to one month or (in aliquots) at -20 °C for longer. Avoid repeated freezing and thawing.
Stability:	Shelf life: one year from despatch.
Gene Name:	even-skipped homeobox 2
Database Link:	<a href="#">Entrez Gene 14029 Mouse P49749</a>
Background:	Evx-2, a protein related to the Drosophila even-skipped (eve) , is expressed in limbs like the neighbouring Hoxd genes. Evx-2 functions like a Hoxd gene.
Synonyms:	LOC344191
Note:	Molecular weight: 47902 Da



[View online »](#)

## Product images:



Western blot analysis of anti-Evx2 Pab in mouse kidney tissue lysates (35 ug/lane). Evx2 (arrow) was detected using the purified Pab (1:60 dilution).