

Product datasheet for **AP11391PU-N**

Lmx1a Rabbit Polyclonal Antibody

Product data:

Product Type:	Primary Antibodies
Applications:	WB
Recommended Dilution:	ELISA 1:1,000. Western blot 1:50 - 1:100.
Reactivity:	Human, Mouse
Host:	Rabbit
Isotype:	Ig
Clonality:	Polyclonal
Immunogen:	This antibody is generated from rabbits immunized with a KLH conjugated synthetic peptide selected from the Center region of mouse LMX1a.
Specificity:	This antibody detects Lmx1a at center.
Formulation:	PBS with 0.09% (W/V) sodium azide State: Purified State: Liquid Ig fraction
Concentration:	lot specific
Purification:	Protein G column, eluted with high and low pH buffers and neutralized immediately, followed by dialysis against PBS.
Conjugation:	Unconjugated
Gene Name:	LIM homeobox transcription factor 1 alpha
Database Link:	Entrez Gene 110648 Mouse Q9JKU8
Background:	Insulin is produced exclusively by the beta cells in the islets of Langerhans in the pancreas. The level and beta-cell specificity of insulin gene expression are regulated by a set of nuclear genes that bind to specific sequences within the promoter of the insulin gene (INS; MIM 176730) and interact with RNA polymerase to activate or repress transcription. LMX1 is a homeodomain protein that binds an A/T-rich sequence in the insulin promoter and stimulates transcription of insulin.

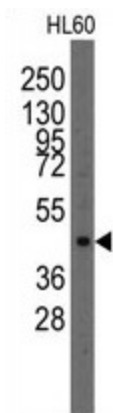


[View online »](#)

Synonyms: LMX1A, LIM homeobox transcription factor 1-alpha, LIM/homeobox protein LMX1A, LIM/homeobox protein 1.1, LMX-1.1

Note: Molecular weight: 42857 Da

Product images:



Western blot analysis of anti-Lmx1a in HL60 cell line lysates (35 ug/lane). Lmx1a (arrow) was detected using the purified Pab (1:60 dilution).