

Product datasheet for **AP11390PU-N**

Tau (MAPT) Rabbit Polyclonal Antibody

Product data:

Product Type:	Primary Antibodies
Applications:	IHC, WB
Recommended Dilution:	ELISA 1:1,000. Western blot 1:50 - 1:100. Immunohistochemistry 1:10 - 1:50.
Reactivity:	Human
Host:	Rabbit
Isotype:	Ig
Clonality:	Polyclonal
Immunogen:	This antibody is generated from rabbits immunized with a KLH conjugated synthetic peptide corresponding to amino acid residues surrounding S720 of human MAPT.
Specificity:	This antibody detects TAU (MAPT).
Formulation:	PBS with 0.09% (W/V) sodium azide State: Aff - Purified State: Liquid Ig fraction
Concentration:	lot specific
Purification:	Protein A column, followed by peptide affinity purification.
Conjugation:	Unconjugated
Storage:	Store the antibody at 2 - 8 °C up to one month or (in aliquots) at -20 °C for longer. Avoid repeated freezing and thawing.
Stability:	Shelf life: one year from despatch.
Gene Name:	microtubule associated protein tau
Database Link:	Entrez Gene 4137 Human P10636
Background:	MAPT transcripts are differentially expressed in the nervous system, depending on stage of neuronal maturation and neuron type. MAPT gene mutations have been associated with several neurodegenerative disorders such as Alzheimer's disease, Pick's disease, frontotemporal dementia, cortico-basal degeneration and progressive supranuclear palsy.

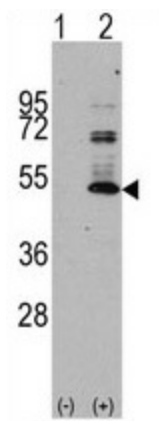


[View online »](#)

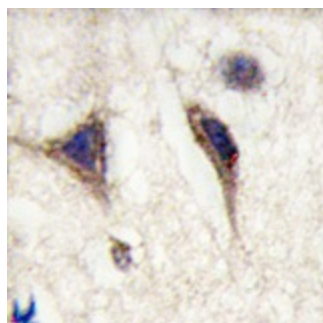
Synonyms: MAPTL, MTBT1, Microtubule-associated protein tau, PHF-tau, Neurofibrillary tangle protein, Paired helical filament-tau

Note: Molecular weight: 78878 Da

Product images:



Western blot analysis of MAPT (arrow) using rabbit MAPT Antibody. 293 cell lysates (2 ug/lane) either nontransfected (Lane 1) or transiently transfected with the MAPT gene (Lane 2) (Origene Technologies).



Formalin-fixed and paraffin-embedded human brain tissue reacted with MAPT Antibody, which was peroxidase-conjugated to the secondary antibody, followed by DAB staining. This data demonstrates the use of this antibody for immunohistochemistry; clinical relevance has not been evaluated.