

## Product datasheet for **AP11386PU-N**

### LHX6 (N-term) Rabbit Polyclonal Antibody

#### Product data:

Product Type:	Primary Antibodies
Applications:	IHC, WB
Recommended Dilution:	<b>Peptide ELISA:</b> 1/1,000. <b>Western blot:</b> 1/50-1/100. <b>Immunohistochemistry:</b> 1/10-1/50.
Reactivity:	Human, Mouse
Host:	Rabbit
Isotype:	Ig
Clonality:	Polyclonal
Immunogen:	KLH conjugated synthetic peptide between 36-65 amino acids from the N-terminal region of human Lhx6.
Specificity:	This antibody detects Lhx6 at N-term.
Formulation:	PBS with 0.09% (W/V) sodium azide State: Aff - Purified State: Liquid Ig fraction
Concentration:	lot specific
Purification:	Protein A column, followed by peptide affinity purification.
Conjugation:	Unconjugated
Storage:	Store undiluted at 2-8°C for one month or (in aliquots) at -20°C for longer. Avoid repeated freezing and thawing.
Stability:	Shelf life: one year from despatch.
Gene Name:	LIM homeobox 6
Database Link:	<a href="#">Entrez Gene 16874 Mouse</a> <a href="#">Entrez Gene 26468 Human</a> <a href="#">Q9UPM6</a>
Background:	Lhx6 is a member of a large protein family that contains the LIM domain, a unique cysteine-rich zinc-binding domain. This protein may function as a transcriptional regulator and may be involved in the control of differentiation and development of neural and lymphoid cells.



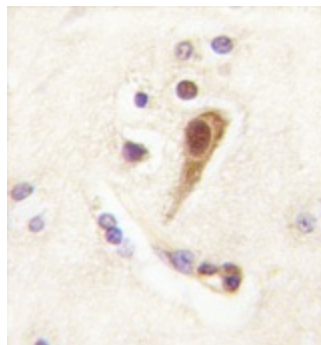
[View online »](#)

**Synonyms:** LHX6, LHX6.1, LIM/homeobox protein Lhx6, LIM homeobox protein 6, LIM/homeobox protein Lhx6.1

**Note:** Molecular weight: 40044 Da

**Protein Families:** Transcription Factors

**Product images:**



Formalin-fixed and paraffin-embedded human brain tissue reacted with Lhx6 Antibody (N-term), which was peroxidase-conjugated to the secondary antibody, followed by DAB staining. This data demonstrates the use of this antibody for immunohistochemistry; clinical relevance has not been evaluated.