

Product datasheet for **AP11380PU-N**

PSCA (Center) Rabbit Polyclonal Antibody

Product data:

Product Type:	Primary Antibodies
Applications:	ELISA, IHC, WB
Recommended Dilution:	Peptide ELISA: 1/1000. Western Blot: 1/1000. Immunohistochemistry: 1/10-1/50.
Reactivity:	Human
Host:	Rabbit
Isotype:	Ig
Clonality:	Polyclonal
Immunogen:	KLH conjugated synthetic peptide between 56-85 amino acids from the Central region of human PSCA.
Specificity:	This antibody detects PSCA at center.
Formulation:	PBS with 0.09% (W/V) sodium azide State: Purified State: Liquid Ig fraction
Concentration:	lot specific
Purification:	Prepared by Saturated Ammonium Sulfate (SAS) precipitation followed by dialysis against PBS.
Conjugation:	Unconjugated
Storage:	Store undiluted at 2-8°C for one month or (in aliquots) at -20°C for longer. Avoid repeated freezing and thawing.
Stability:	Shelf life: one year from despatch.
Gene Name:	prostate stem cell antigen
Database Link:	Entrez Gene 8000 Human O43653



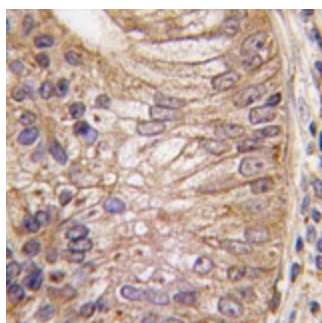
[View online »](#)

Background: PSCA is a glycosylphosphatidylinositol-anchored cell membrane glycoprotein. In addition to being highly expressed in the prostate it is also expressed in the bladder, placenta, colon, kidney, and stomach. It is up-regulated in a large proportion of prostate cancers and is also detected in cancers of the bladder and pancreas.

Synonyms: Prostate stem cell antigen

Note: Molecular weight: 12912 Da

Product images:



Formalin-fixed and paraffin-embedded human prostata carcinoma tissue reacted with PSCA antibody (Center), which was peroxidase-conjugated to the secondary antibody, followed by DAB staining. This data demonstrates the use of this antibody for immunohistochemistry; clinical relevance has not been evaluated.