

## Product datasheet for **AP11379PU-N**

### Collagen II (COL2A1) Rabbit Polyclonal Antibody

#### Product data:

Product Type:	Primary Antibodies
Applications:	WB
Recommended Dilution:	<b>Western blot:</b> 1/1000.
Reactivity:	Human
Host:	Rabbit
Isotype:	Ig
Clonality:	Polyclonal
Immunogen:	KLH conjugated synthetic peptide between 1209-1237 amino acids from the C-terminal region of human COL2A1.
Specificity:	This antibody detects COL2A1 at C-term.
Formulation:	PBS with 0.09% (W/V) sodium azide State: Aff - Purified State: Liquid purified Ig fraction
Concentration:	lot specific
Purification:	Protein A column, followed by peptide affinity purification
Conjugation:	Unconjugated
Storage:	Store undiluted at 2-8°C for one month or (in aliquots) at -20°C for longer. Avoid repeated freezing and thawing.
Stability:	Shelf life: one year from despatch.
Predicted Protein Size:	141785 Da
Gene Name:	collagen type II alpha 1 chain
Database Link:	<a href="#">Entrez Gene 1280 Human P02458</a>



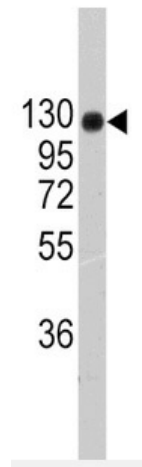
[View online »](#)

**Background:**

Alpha-1 chain of type II collagen is a fibrillar collagen found in cartilage and the vitreous humor of the eye. Mutant forms of this protein are associated with achondrogenesis, chondrodysplasia, early onset familial osteoarthritis, SED congenita, Langer-Saldino achondrogenesis, Kniest dysplasia, Stickler syndrome type I, and spondyloepimetaphyseal dysplasia Strudwick type. In addition, defects in processing chondrocalcin, a calcium binding protein that is the C-propeptide of this collagen molecule, are also associated with chondrodysplasia.

**Synonyms:**

COL2A1, Alpha-1 type II collagen

**Product images:**

Western blot analysis of anti-COL2A1 (C-term) in 293 cell line lysates (35ug/lane). COL2A1 (arrow) was detected using the purified Pab.