

Product datasheet for **AP11372PU-N**

K Cadherin (CDH6) (N-term) Rabbit Polyclonal Antibody

Product data:

Product Type:	Primary Antibodies
Applications:	IHC, WB
Recommended Dilution:	ELISA 1:1,000. Western blot 1:50 - 1:100. Immunohistochemistry 1:10 - 1:50.
Reactivity:	Human
Host:	Rabbit
Isotype:	Ig
Clonality:	Polyclonal
Immunogen:	This antibody is generated from rabbits immunized with a KLH conjugated synthetic peptide selected from the N-terminal region of human CDH6.
Specificity:	This antibody detects K Cadherin at N-term.
Formulation:	PBS with 0.09% (W/V) sodium azide State: Aff - Purified State: Liquid Ig fraction
Concentration:	lot specific
Purification:	Protein A column, followed by peptide affinity purification
Conjugation:	Unconjugated
Storage:	Store the antibody at 2 - 8 °C up to one month or (in aliquots) at -20 °C for longer. Avoid repeated freezing and thawing.
Stability:	Shelf life: one year from despatch.
Gene Name:	cadherin 6
Database Link:	Entrez Gene 1004 Human P55285



[View online »](#)

Background:

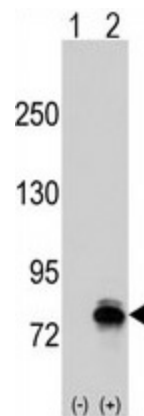
CDH6 is a type II classical cadherin from the cadherin superfamily. It is a calcium dependent cell-cell adhesion membrane glycoprotein comprised of five extracellular cadherin repeats, a transmembrane region and a highly conserved cytoplasmic tail. Cadherins mediate cell-cell binding in a homophilic manner, contributing to the sorting of heterogeneous cell types and the maintenance of orderly structures such as epithelium. Strong transcriptional expression of the CDH6 gene has been observed in hepatocellular and renal carcinoma cell lines, suggesting a possible role in metastasis and invasion.

Synonyms:

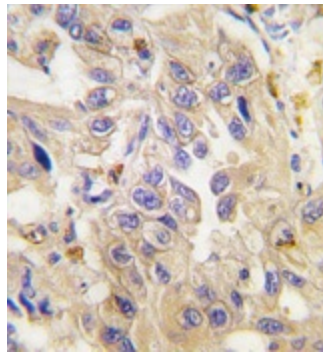
CDH6, Kidney cadherin, Cadherin K, K-Cadherin

Note:

Molecular weight: 88309 Da

Product images:

Western blot analysis of CDH6 (arrow) using rabbit polyclonal CDH6 Antibody (N-term). 293 cell lysates (2 ug/lane) either nontransfected (Lane 1) or transiently transfected with the CDH6 gene (Lane 2) (Origene Technologies).



Formalin-fixed and paraffin-embedded human lung carcinoma tissue reacted with CDH6 antibody (N-term), which was peroxidase-conjugated to the secondary antibody, followed by DAB staining. This data demonstrates the use of this antibody for immunohistochemistry; clinical relevance has not been evaluated.