

Product datasheet for **AP11355PU-N**

Nucleostemin (GNL3) Rabbit Polyclonal Antibody

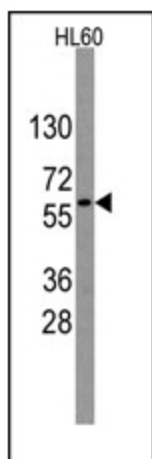
Product data:

Product Type:	Primary Antibodies
Applications:	WB
Recommended Dilution:	ELISA: 1/1,000. Western Blot: 1/50-1/100.
Reactivity:	Human
Host:	Rabbit
Isotype:	Ig
Clonality:	Polyclonal
Immunogen:	This antibody is generated from rabbits immunized with a KLH conjugated synthetic peptide selected from the Center region of human GNL3.
Specificity:	This antibody is specific to GNL3 (Center).
Formulation:	PBS containing 0.09% (W/V) Sodium Azide as preservative. State: Purified State: Liquid purified Ig fraction.
Concentration:	lot specific
Purification:	Saturated Ammonium Sulfate (SAS) precipitation followed by dialysis against PBS.
Conjugation:	Unconjugated
Storage:	Store the antibody undiluted at 2-8°C for one month or (in aliquots) at -20°C for longer. Avoid repeated freezing and thawing.
Stability:	Shelf life: one year from despatch.
Gene Name:	G protein nucleolar 3
Database Link:	Entrez Gene 26354 Human Q9BVP2
Background:	GNL3 may be required to maintain the proliferative capacity of stem cells.
Synonyms:	GNL3, E2IG3, NS, Guanine nucleotide-binding protein-like 3, Nucleolar GTP-binding protein 3, Novel nucleolar protein 47
Note:	Calculated MW: 61997 Da



[View online »](#)

Product images:



Western blot analysis of anti-GNL3 Antibody (Center) in HL60 cell line lysates (35ug/lane). GNL3 (arrow) was detected using the purified Pab (1:60 dilution).