

## Product datasheet for **AP11347PU-N**

### AMID (AIFM2) Rabbit Polyclonal Antibody

#### Product data:

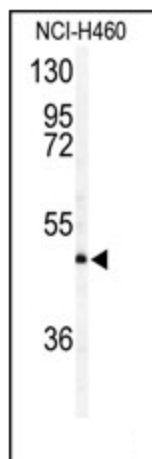
Product Type:	Primary Antibodies
Applications:	WB
Recommended Dilution:	ELISA: 1/1,000. Western blot: 1/50-1/100.
Reactivity:	Human
Host:	Rabbit
Isotype:	Ig
Clonality:	Polyclonal
Immunogen:	This antibody is generated from rabbits immunized with a KLH conjugated synthetic peptide selected from the Center region of human AIFM2.
Specificity:	This antibody is specific to AIFM2 (Center).
Formulation:	PBS containing 0.09% (W/V) Sodium Azide as preservative. State: Purified State: Liquid purified Ig fraction.
Concentration:	lot specific
Purification:	Saturated Ammonium Sulfate (SAS) precipitation followed by dialysis against PBS.
Conjugation:	Unconjugated
Storage:	Store the antibody undiluted at 2-8°C for one month or (in aliquots) at -20°C for longer. Avoid repeated freezing and thawing.
Stability:	Shelf life: one year from despatch.
Gene Name:	apoptosis inducing factor, mitochondria associated 2
Database Link:	<a href="#">Entrez Gene 84883 Human Q9BRQ8</a>
Background:	AIFM2 is significant homology to NADH oxidoreductases and the apoptosis-inducing factor PDCD8/AIF. The protein has been shown to induce apoptosis. This protein is found to be induced by tumor suppressor protein p53 in colon cancer cells.
Synonyms:	Apoptosis-inducing factor 2, AMID, PRG3



[View online »](#)

Note: Calculated MW: 40527 Da

### Product images:



Western blot analysis of AIFM2 antibody (Center) in NCI-H460 cell line lysates (35ug/lane). AIFM2 (arrow) was detected using the purified Pab.