

Product datasheet for **AP11341PU-N**

APOBEC3G (Center) Rabbit Polyclonal Antibody

Product data:

Product Type:	Primary Antibodies
Applications:	IHC, WB
Recommended Dilution:	ELISA: 1/1,000. Western blot: 1/100-1/500. Immunohistochemistry: 1/50-1/100.
Reactivity:	Human
Host:	Rabbit
Isotype:	Ig
Clonality:	Polyclonal
Immunogen:	This polyclonal antibody is generated from mice immunized with KLH conjugated synthetic peptides corresponding to middle region of human CEM15.
Specificity:	This antibody is specific to CEM15/APOBEC3G (Center).
Formulation:	PBS containing 0.09% (W/V) Sodium Azide as preservative. State: Purified State: Liquid purified Ig fraction.
Concentration:	lot specific
Purification:	Protein G Chromatography, eluted with high and low pH buffers and neutralized immediately, followed by dialysis against PBS.
Conjugation:	Unconjugated
Storage:	Store the antibody undiluted at 2-8°C for one month or (in aliquots) at -20°C for longer. Avoid repeated freezing and thawing.
Stability:	Shelf life: one year from despatch.
Gene Name:	apolipoprotein B mRNA editing enzyme catalytic subunit 3G
Database Link:	Entrez Gene 60489 Human Q9HC16



[View online »](#)

Background:

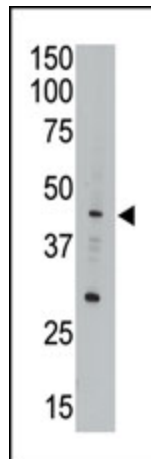
CEM15 is a member of the cytidine deaminase family. It is the product of one of seven related genes or pseudogenes found in a cluster, thought to result from gene duplication, on chromosome 22. Members of the cluster encode proteins that are structurally and functionally related to the C to U RNA-editing cytidine deaminase APOBEC1. It is thought that the proteins may be RNA editing enzymes and have roles in growth or cell cycle control. CEM15 has been found to be a specific inhibitor of human immunodeficiency virus-1 (HIV-1) infectivity.

Synonyms:

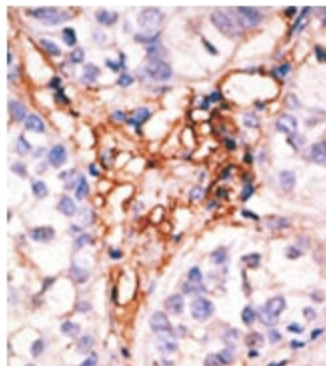
ARP9, CEM15, MDS019, APOBEC-3G, ARCD

Note:

Calculated MW: 46408 Da

Product images:

Western Blot analysis of anti-CEM15 Pab to detect CEM15 in A549 cell lysate.



Formalin-fixed and paraffin-embedded human cancer tissue reacted with the primary antibody, which was peroxidase-conjugated to the secondary antibody, followed by AEC staining. This data demonstrates the use of this antibody for immunohistochemistry; clinical relevance has not been evaluated.