

Product datasheet for **AP11339PU-N**

Thioredoxin 2 (TXN2) (C-term) Rabbit Polyclonal Antibody

Product data:

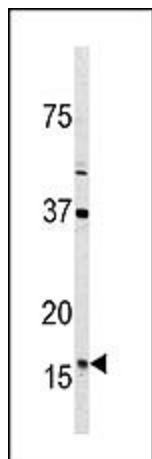
Product Type:	Primary Antibodies
Applications:	WB
Recommended Dilution:	ELISA: 1/1,000. Western blot: 1/100-1/500.
Reactivity:	Human
Host:	Rabbit
Isotype:	Ig
Clonality:	Polyclonal
Immunogen:	This antibody is generated from rabbits immunized with a KLH conjugated synthetic peptide selected from the C-terminal region of human Trx2.
Specificity:	This antibody is specific to Thioredoxin 2 (Trx2) (C-term).
Formulation:	PBS containing 0.09% (W/V) Sodium Azide as preservative. State: Purified State: Liquid purified Ig fraction.
Concentration:	lot specific
Purification:	Protein G Chromatography, eluted with high and low pH buffers and neutralized immediately, followed by dialysis against PBS.
Conjugation:	Unconjugated
Storage:	Store the antibody undiluted at 2-8°C for one month or (in aliquots) at -20°C for longer. Avoid repeated freezing and thawing.
Stability:	Shelf life: one year from despatch.
Gene Name:	thioredoxin 2
Database Link:	Entrez Gene 25828 Human Q99757
Background:	TRX2 is a mitochondrial member of the thioredoxin family, a group of small multifunctional redox-active proteins. The encoded protein may play important roles in the regulation of the mitochondrial membrane potential and in protection against oxidant-induced apoptosis.
Synonyms:	TXN2, mitochondrial Thioredoxin



[View online »](#)

Note: Calculated MW: 18383 Da

Product images:



Western blot analysis of anti-Trx2-I151 Pab in 293 cell line lysate (35ug/lane). Trx2-I151 (arrow) was detected using the purified Pab (1:36 dilution).