

Product datasheet for **AP11335PU-N**

TXNL1 (C-term) Rabbit Polyclonal Antibody

Product data:

Product Type:	Primary Antibodies
Applications:	IHC, WB
Recommended Dilution:	ELISA: 1/1,000. Western blot: 1/100-1/500. Immunohistochemistry: 1/50-1/100.
Reactivity:	Human
Host:	Rabbit
Isotype:	Ig
Clonality:	Polyclonal
Immunogen:	This antibody is generated from rabbits immunized with a KLH conjugated synthetic peptide selected from the C-terminal region of human TrxL.
Specificity:	This antibody is specific to TXNL1 (TRP32/TrxL) (C-term).
Formulation:	PBS containing 0.09% (W/V) Sodium Azide as preservative. State: Purified State: Liquid purified Ig fraction.
Concentration:	lot specific
Purification:	Protein G Chromatography, eluted with high and low pH buffers and neutralized immediately, followed by dialysis against PBS.
Conjugation:	Unconjugated
Storage:	Store the antibody undiluted at 2-8°C for one month or (in aliquots) at -20°C for longer. Avoid repeated freezing and thawing.
Stability:	Shelf life: one year from despatch.
Gene Name:	thioredoxin like 1
Database Link:	Entrez Gene 9352 Human O43396



[View online »](#)

Background:

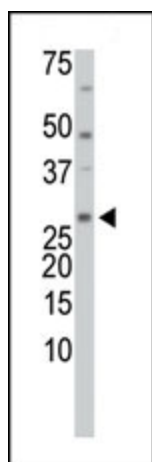
Thioredoxins are a group of small redox active proteins possessing a conserved active site sequence. TrxL (Thioredoxin like protein 1) has 2 distinct domains: an N terminal domain, which is 43% identical to human TXN, and a C terminal domain, which shows no homology to other proteins in the sequence databases. The active site sequence, located within the N terminal domain, is that of a thioredoxin like protein; compared to the active site sequence of TXN, it has a single amino acid substitution. Unlike other thioredoxin like proteins, TrxL does not serve as a substrate for thioredoxin reductase in an insulin assay.

Synonyms:

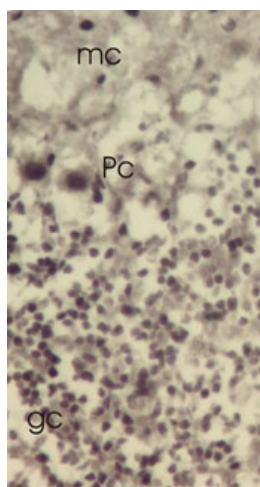
Thioredoxin-like protein 1, TXL, TXNL, TRP32

Note:

Calculated MW: 32251 Da

Product images:


Western blot analysis using anti-TrxL Pab to detect TrxL in HL-60 cell lysate.



Mouse cerebellar cortex showing molecular cell layer (mc), Purkinje cells (Pc) and granular cell layer. Trxl-1 antibody gives strong nuclear labeling in Purkinje cells and granular cells with lower cytoplasmic staining. The results correspond precisely to TrxL-1 mRNA expression shown with in situ hybridization (Jimenez A et al. FEBS Lett. 2006, 580 (3):960-7) and could be abolished with peptide used for immunization (Blocking peptide). The fixation was 4% paraformaldehyde perfusion (4mins) and 60 mins immersion. Staining was done in frozen sections with Vector Elite kit and nickel intensified DAB as a chromogen. Data courtesy of Prof. Markku Peltö-Huikko, Department of Developmental Biology, Medical School, Tampere University, Finland.