

## Product datasheet for **AP11296PU-N**

### **Bcl G (BCL2L14) (BH3 Domain) Rabbit Polyclonal Antibody**

#### **Product data:**

|                              |  |
|------------------------------|--|
| <b>Product Type:</b>         | Primary Antibodies   |
| <b>Applications:</b>         | IHC, WB  |
| <b>Recommended Dilution:</b> | ELISA: 1/1,000.<br>Western blot: 1/100-1/500.<br>Immunohistochemistry: 1/50-1/100.   |
| <b>Reactivity:</b>           | Human, Mouse   |
| <b>Host:</b>                 | Rabbit   |
| <b>Isotype:</b>              | Ig   |
| <b>Clonality:</b>            | Polyclonal   |
| <b>Immunogen:</b>            | This antibody was developed against a synthetic peptide selected from the BH3 domain of human Bcl-G isoform 3 (Median form).   |
| <b>Specificity:</b>          | This antibody is specific to Bcl-G (BH3 Domain).   |
| <b>Formulation:</b>          | PBS containing 0.09% (W/V) Sodium Azide as preservative.<br>State: Purified<br>State: Liquid purified Ig fraction.   |
| <b>Concentration:</b>        | lot specific   |
| <b>Purification:</b>         | Protein G Chromatography, eluted with high and low pH buffers and neutralized immediately, followed by dialysis against PBS.   |
| <b>Conjugation:</b>          | Unconjugated   |
| <b>Storage:</b>              | Store the antibody undiluted at 2-8°C for one month or (in aliquots) at -20°C for longer. Avoid repeated freezing and thawing.   |
| <b>Stability:</b>            | Shelf life: one year from despatch.  |
| <b>Gene Name:</b>            | BCL2 like 14   |
| <b>Database Link:</b>        | <a href="#">Entrez Gene 79370 Human Q9BZR8</a>   |
| <b>Background:</b>           | Bcl-G belongs to the BCL2 protein family. BCL2 family members form hetero- or homodimers and act as anti- or pro-apoptotic regulators that are involved in a wide variety of cellular activities. Overexpression of Bcl-G has been shown to induce apoptosis in cells. |

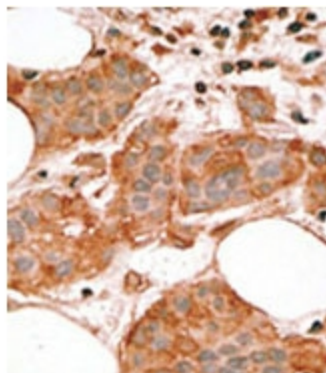


[View online »](#)

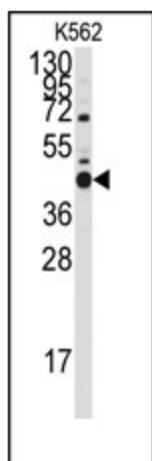
**Synonyms:** Bcl-G, Bcl2-L-14, BCLG, BCL2L14

**Note:** Calculated MW: 36598 Da

**Product images:**



Formalin-fixed and paraffin-embedded human cancer tissue reacted with the primary antibody, which was peroxidase-conjugated to the secondary antibody, followed by AEC staining. This data demonstrates the use of this antibody for immunohistochemistry; clinical relevance has not been evaluated.



Western blot analysis of anti-Bcl-G BH3 Domain Pab (Cat. #AP11296PU-N) in K562 cell line lysates (35ug/lane). Bcl-G BH3 Domain (arrow) was detected using the purified Pab.