

Product datasheet for **AP11285PU-N**

smt3 (C-term) Rabbit Polyclonal Antibody

Product data:

Product Type:	Primary Antibodies
Applications:	WB
Recommended Dilution:	ELISA: 1/1,000. Western blot: 1/100-1/500 (See also Ref.1).
Reactivity:	Drosophila, Human
Host:	Rabbit
Isotype:	Ig
Clonality:	Polyclonal
Immunogen:	This antibody is generated from rabbits immunized with a KLH conjugated synthetic peptide selected from the C-terminal region of Drosophila SUMO1.
Specificity:	This antibody is specific to SUMO (C-term).
Formulation:	PBS containing 0.09% (W/V) Sodium Azide as preservative State: Purified State: Liquid purified Ig fraction
Concentration:	lot specific
Purification:	Protein G Chromatography, eluted with high and low pH buffers and neutralized immediately, followed by dialysis against PBS.
Conjugation:	Unconjugated
Storage:	Store the antibody undiluted at 2-8°C for one month or (in aliquots) at -20°C for longer. Avoid repeated freezing and thawing.
Stability:	Shelf life: one year from despatch.
Database Link:	O97102
Background:	Covalent modification of target lysines by SUMO (small ubiquitin-like modifier) modulates processes such as protein localization, transcription, nuclear transport, mitosis, DNA replication and repair, signal transduction, and viral reproduction. SUMO does not seem to be involved in protein degradation and may in fact function as an antagonist of ubiquitin in the degradation process. In the development of Drosophila, SUMO plays a maternal role in anterior-posterior (A/P) polarity and patterning.



[View online »](#)

Synonyms: SMT-3

Note: Predicted MW: 10124 Da

Product images:

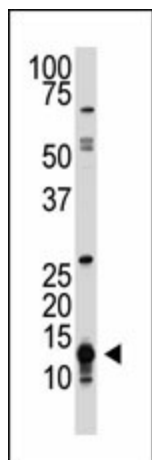


Figure 1. Western blot analysis using anti-SUMO1 Pab to detect SUMO1 in HL-60 cell lysate.