

Product datasheet for **AP11263PU-N**

SENP8 (N-term) Rabbit Polyclonal Antibody

Product data:

Product Type:	Primary Antibodies
Applications:	WB
Recommended Dilution:	ELISA: 1/1,000. Western blot: 1/100-1/500.
Reactivity:	Human, Mouse
Host:	Rabbit
Isotype:	Ig
Clonality:	Polyclonal
Immunogen:	This antibody is generated from rabbits immunized with a KLH conjugated synthetic peptide selected from the N-terminal region of human SENP8.
Specificity:	This antibody is specific to SENP8 (N-term).
Formulation:	PBS containing 0.09% (W/V) Sodium Azide as preservative. State: Purified State: Liquid purified Ig fraction.
Concentration:	lot specific
Purification:	Protein G Chromatography, eluted with high and low pH buffers and neutralized immediately, followed by dialysis against PBS.
Conjugation:	Unconjugated
Storage:	Store the antibody undiluted at 2-8°C for one month or (in aliquots) at -20°C for longer. Avoid repeated freezing and thawing.
Stability:	Shelf life: one year from despatch.
Gene Name:	SUMO/sentrin peptidase family member, NEDD8 specific
Database Link:	Entrez Gene 123228 Human Q96LD8



[View online »](#)

Background:

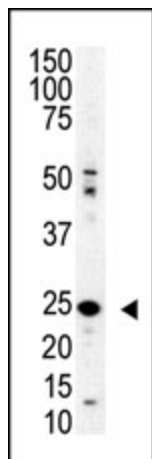
NEDD8 is a ubiquitin-like protein that becomes conjugated to the cullin subunit of several ubiquitin ligases. This conjugation, called neddylation, is required for optimal ubiquitin ligase activity. SENP8 is a protease that catalyzes two essential functions in the NEDD8 pathway: processing of full-length NEDD8 to its mature form and deconjugation of NEDD8 from targeted proteins such as cullins or p53.

Synonyms:

Sentrin-specific protease 8, Deneddylase-1, DEN1, NEDP1, PRSC2

Note:

Predicted MW: 24107 Da

Product images:

Western blot analysis of SENP8 polyclonal antibody in mouse spleen lysate. SENP8 (arrow) was detected using purified Pab. Secondary HRP-anti-rabbit was used for signal visualization with chemiluminescence.