

Product datasheet for **AP11244PU-N**

SENP7 (C-term) Rabbit Polyclonal Antibody

Product data:

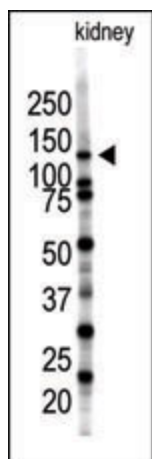
Product Type:	Primary Antibodies
Applications:	WB
Recommended Dilution:	ELISA: 1/1,000. Western Blot: 1/100-1/500.
Reactivity:	Human, Mouse
Host:	Rabbit
Isotype:	Ig
Clonality:	Polyclonal
Immunogen:	This antibody is generated from rabbits immunized with a KLH conjugated synthetic peptide selected from the C-terminal region of human SENP7.
Specificity:	This antibody is specific to SENP7 (C-term).
Formulation:	PBS containing 0.09% (W/V) Sodium Azide as preservative. State: Purified State: Liquid purified Ig fraction.
Concentration:	lot specific
Purification:	Protein G Chromatography, eluted with high and low pH buffers and neutralized immediately, followed by dialysis against PBS.
Conjugation:	Unconjugated
Storage:	Store the antibody undiluted at 2-8°C for one month or (in aliquots) at -20°C for longer. Avoid repeated freezing and thawing.
Stability:	Shelf life: one year from despatch.
Gene Name:	SUMO1/sentrin specific peptidase 7
Database Link:	Entrez Gene 57337 Human Q9BQF6
Background:	SENP7 is a protease that may be involved in two essential functions in the SUMO pathway: processing of full-length SUMO1, SUMO2 and SUMO3 to their mature conjugatable forms and/or deconjugation of SUMO1, SUMO2 and SUMO3 from targeted substrate proteins.
Synonyms:	Sentrin-specific protease 7, KIAA1707, SSP2, SUSP2



[View online »](#)

Note: Predicted MW: 112264 Da

Product images:



Western blot analysis of SENP7 polyclonal antibody in mouse kidney tissue lysate (35ug/lane). SENP7 (arrow) was detected using the purified Pab.