

Product datasheet for **AP11240PU-N**

SENP5 (C-term) Rabbit Polyclonal Antibody

Product data:

Product Type:	Primary Antibodies
Applications:	IHC, WB
Recommended Dilution:	ELISA: 1/1,000. Western BLOT: 1/100-1/500. Immunohistochemistry: 1/50-1/100.
Reactivity:	Human
Host:	Rabbit
Isotype:	Ig
Clonality:	Polyclonal
Immunogen:	This antibody is generated from rabbits immunized with a KLH conjugated synthetic peptide selected from the C-terminal region of human SENP5.
Specificity:	This antibody is specific to SENP5 (C-term).
Formulation:	PBS containing 0.09% (W/V) Sodium Azide as preservative. State: Purified State: Liquid purified Ig fraction.
Concentration:	lot specific
Purification:	Protein G Chromatography, eluted with high and low pH buffers and neutralized immediately, followed by dialysis against PBS.
Conjugation:	Unconjugated
Storage:	Store the antibody undiluted at 2-8°C for one month or (in aliquots) at -20°C for longer. Avoid repeated freezing and thawing.
Stability:	Shelf life: one year from despatch.
Gene Name:	SUMO1/sentrin specific peptidase 5
Database Link:	Entrez Gene 205564 Human Q96HI0



[View online »](#)

Background:

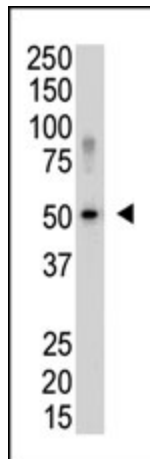
SENP5 is a protease that catalyzes two essential functions in the SUMO pathway: processing of full-length SUMO3 to its conjugatable mature form and deconjugation of SUMO2 and SUMO3 from targeted substrates. This protein has weak proteolytic activity against full-length SUMO1 or SUMO1 conjugates. SENP5 is required for cell division.

Synonyms:

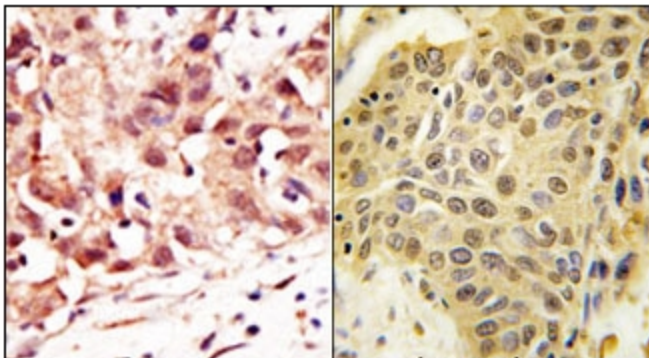
Sentrin-specific protease 5

Note:

Predicted MW: 86733 Da

Product images:


Western blot analysis of SENP5 polyclonal antibody in Saos-2 cell lysate. SENP5 (Arrow) was detected using purified Pab. Secondary HRP-anti-rabbit was used for signal visualization with chemiluminescence.



(LEFT) Formalin-fixed and paraffin-embedded human cancer tissue reacted with the primary antibody, which was peroxidase-conjugated to the secondary antibody, followed by DAB staining. This data demonstrates the use of this antibody for immunohistochemistry; clinical relevance has not been evaluated. (RIGHT) Formalin-fixed and paraffin-embedded human lung carcinoma tissue reacted with SENP5 Antibody (C-term), which was peroxidase-conjugated to the secondary antibody, followed by DAB staining. This data demonstrates the use of this antibody for immunohistochemistry; clinical relevance has not been evaluated.