

Product datasheet for **AP11222PU-N**

Sumo 3 (SUMO3) (Center) Rabbit Polyclonal Antibody

Product data:

Product Type:	Primary Antibodies
Applications:	WB
Recommended Dilution:	ELISA: 1/1,000. Western blot: 1/100-1/500.
Reactivity:	Human
Host:	Rabbit
Isotype:	Ig
Clonality:	Polyclonal
Immunogen:	This antibody is generated from rabbits immunized with a KLH conjugated synthetic peptide at the center region of human SUMO2/3.
Specificity:	This antibody is specific to SUMO2/3 (Center).
Formulation:	PBS containing 0.09% (W/V) Sodium Azide as preservative. State: Purified State: Liquid purified Ig fraction.
Concentration:	lot specific
Purification:	Protein G Chromatography, eluted with high and low pH buffers and neutralized immediately, followed by dialysis against PBS.
Conjugation:	Unconjugated
Storage:	Store the antibody undiluted at 2-8°C for one month or (in aliquots) at -20°C for longer. Avoid repeated freezing and thawing.
Stability:	Shelf life: one year from despatch.
Gene Name:	small ubiquitin-like modifier 3
Database Link:	Entrez Gene 6612 Human P55854



[View online »](#)

Background:

SUMO2 and SUMO3 are members of the SUMO (small ubiquitin-like modifier) protein family. This protein family functions in a manner similar to ubiquitin in that it is bound to target proteins as part of a post-translational modification system. However, unlike ubiquitin which targets proteins for degradation, this protein is involved in a variety of cellular processes, such as nuclear transport, transcriptional regulation, apoptosis, and protein stability. In vertebrates, three members of the SUMO family have been described, SUMO 1 and the functionally distinct homologues SUMO 2 and SUMO 3. SUMO modification sites present in the N terminal regions of SUMO 2 and SUMO 3 are utilized by SAE1/SAE2 (SUMO E1) and Ubc9 (SUMO E2) to form polymeric chains of SUMO 2 and SUMO 3 on protein substrates, a property not shared by SUMO 1.

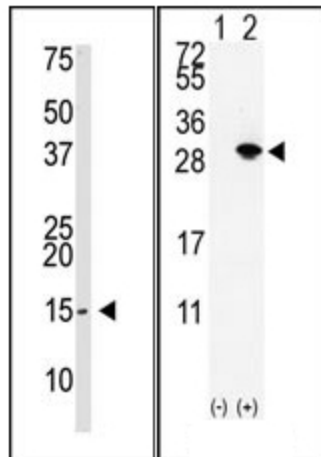
Synonyms:

SUMO-2, SMT3B, SMT3H2, HSMT3, Sentrin-2, SUMO-3, SMT3 homolog 1, SMT3H1

Note:

Predicted MW: 10.871 kDa

Product images:



(LEFT) Western Blot analysis using anti-SUMO2/3 Pab to detect SUMO2/3 in Saos-2 cell lysate. (RIGHT) Western blot analysis of SUMO3 (arrow) using rabbit polyclonal SUMO2/3 Antibody (Center). 293 cell lysates (2 ug/lane) either nontransfected (Lane 1) or transiently transfected with the SUMO3 gene (Lane 2) (Origene Technologies).