

## Product datasheet for **AP11193PU-N**

### **RIZ1 (PRDM2) Rabbit Polyclonal Antibody**

#### **Product data:**

Product Type:	Primary Antibodies
Applications:	IHC, IP, WB
Recommended Dilution:	<b>ELISA:</b> 1/1,000. <b>Western Blot:</b> 1/100-1/500. <b>Immunoprecipitation:</b> 1 µg Pab/100 µg cell lysate. <b>Immunohistochemistry:</b> 1/100-1/500.
Reactivity:	Human, Mouse, Rat
Host:	Rabbit
Isotype:	Ig
Clonality:	Polyclonal
Immunogen:	Purified recombinant GST fusion protein encoding aa 245-573 of Rat Riz1.
Formulation:	PBS with 0.09% (W/V) Sodium Azide as preservative State: Purified State: Liquid purified Ig fraction
Concentration:	lot specific
Purification:	Protein G Chromatography, eluted with high and low pH buffers and neutralized immediately, followed by dialysis against PBS.
Conjugation:	Unconjugated
Storage:	Store undiluted at 2-8°C for one month or (in aliquots) at -20°C for longer. Avoid repeated freezing and thawing.
Stability:	Shelf life: one year from despatch.
Gene Name:	PR domain 2
Database Link:	<a href="#">Entrez Gene 7799 Human Q13029</a>



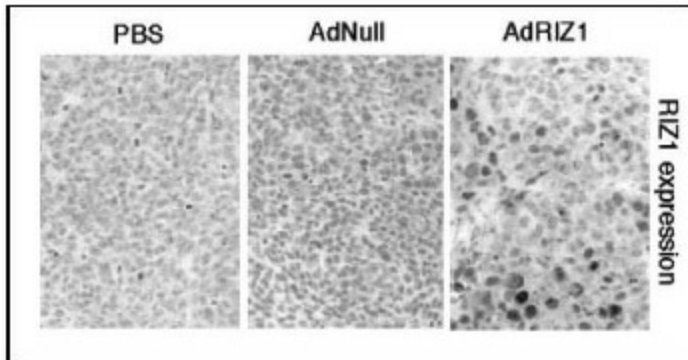
[View online »](#)

**Background:**

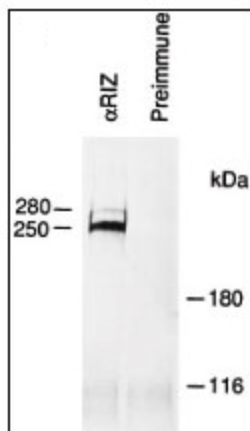
PRDM2 is a 250-kD nuclear protein containing 8 zinc finger motifs. It contains an RB-binding motif that is related to that of the adenovirus E1A oncoprotein; RIZ also shares an antigenic epitope with the C terminus of E1A. It is expressed in human retinoblastoma cells and at low levels in all other human cell lines examined. Using fluorescence in situ hybridization, the PRDM2 gene has been mapped to 1p36. PRDM2 may be a candidate target of 1p36 alterations that commonly occur in neuroendocrine, breast, liver, colon, skin, and lymphoid tumors.

**Synonyms:**

PR domain zinc finger protein 2, KMT8, RIZ1, RIZ2, MTB-ZF, HUMHOXY1

**Product images:**


Immunohistochemical analysis of RIZ1 in adenovirus-transduced tumor cells. Established HCT116 xenograft tumors at day 2 after infection of AdRIZ1, Adnull, or buffer alone were processed for RIZ1 in situ detection (TUNEL) analysis.



Rat B50 brain tumor cell extracts were immunoprecipitated with RIZ antibody or preimmune.