

## Product datasheet for **AP11171PU-N**

### **KMT5A (C-term) Rabbit Polyclonal Antibody**

#### **Product data:**

Product Type:	Primary Antibodies
Applications:	WB
Recommended Dilution:	<b>ELISA:</b> 1/1000. <b>Western Blot:</b> 1/100-1/500.
Reactivity:	Human
Host:	Rabbit
Isotype:	Ig
Clonality:	Polyclonal
Immunogen:	KLH conjugated synthetic peptide between 364-393 amino acids from the C-terminal region of human SET07
Specificity:	This antibody is specific to HumanSETD8 / SET07 (C-term)
Formulation:	PBS containing 0.09% (W/V) Sodium Azide as preservative State: Purified State: Liquid purified Ig fraction.
Concentration:	lot specific
Purification:	Protein G Chromatography, eluted with high and low pH buffers and neutralized immediately, followed by dialysis against PBS
Conjugation:	Unconjugated
Storage:	Store undiluted at 2-8°C for one month or (in aliquots) at -20°C for longer. Avoid repeated freezing and thawing.
Stability:	Shelf life: one year from despatch.
Gene Name:	lysine methyltransferase 5A
Database Link:	<a href="#">Entrez Gene 387893 Human Q9NQR1</a>



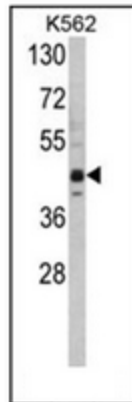
[View online »](#)

**Background:**

SET07 is a histone methyltransferase that methylates Lys-20 of histone H4. H4 Lys-20 methylation represents a specific tag for epigenetic transcriptional repression. The nuclear SET07 protein, which associates with silent chromatin on euchromatic arms but shows no association with constitutive heterochromatin, prefers nucleosomes as substrate compared to free histones. It appears that SET07 may play a role in maintaining silent chromatin by preventing neighboring acetylation of H4 tail. Although the SET domain contains the active site of enzymatic activity, both sequences upstream and downstream of the SET domain are required for methyltransferase activity.

**Synonyms:**

SET8, PRSET7, PR-Set7, KMT5A

**Product images:**

Western blot analysis of SET07 Antibody (C-term) in K562 cell line lysates (35ug/lane). SET07 (arrow) was detected using the purified Pab.