

Product datasheet for **AP11170PU-N**

KMT5A (N-term) Rabbit Polyclonal Antibody

Product data:

| | |
|------------------------------|---|
| Product Type: | Primary Antibodies |
| Applications: | IHC, WB |
| Recommended Dilution: | ELISA: 1/1,000. Western Blot: 1/100-1/500. Immunohistochemistry: 1/50-1/100. |
| Reactivity: | Human, Mouse |
| Host: | Rabbit |
| Isotype: | Ig |
| Clonality: | Polyclonal |
| Immunogen: | This antibody is generated from rabbits immunized with a KLH conjugated synthetic peptide selected from the N-terminal region of human SET07. |
| Specificity: | This antibody is specific to SET07 (N-term). |
| Formulation: | PBS containing 0.09% (W/V) Sodium Azide as preservative. State: Purified State: Liquid purified Ig fraction. |
| Concentration: | lot specific |
| Purification: | Protein G Chromatography, eluted with high and low pH buffers and neutralized immediately, followed by dialysis against PBS. |
| Conjugation: | Unconjugated |
| Storage: | Store the antibody undiluted at 2-8°C for one month or (in aliquots) at -20°C for longer. Avoid repeated freezing and thawing. |
| Stability: | Shelf life: one year from despatch. |
| Gene Name: | lysine methyltransferase 5A |
| Database Link: | Entrez Gene 387893 Human Q9NQR1 |



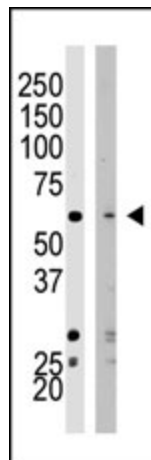
[View online »](#)

Background:

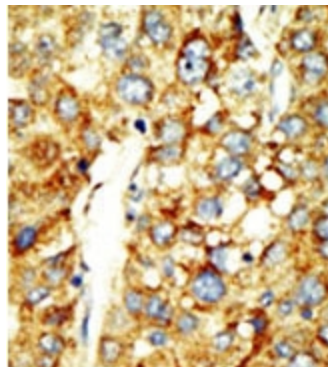
SET07 is a histone methyltransferase that methylates Lys-20 of histone H4. H4 Lys-20 methylation represents a specific tag for epigenetic transcriptional repression. The nuclear SET07 protein, which associates with silent chromatin on euchromatic arms but shows no association with constitutive heterochromatin, prefers nucleosomes as substrate compared to free histones. It appears that SET07 may play a role in maintaining silent chromatin by preventing neighboring acetylation of H4 tail. Although the SET domain contains the active site of enzymatic activity, both sequences upstream and downstream of the SET domain are required for methyltransferase activity.

Synonyms:

SET8, PRSET7, PR-Set7, KMT5A

Product images:


Western blot analysis of SET07 polyclonal antibody in HeLa cell lysate (Lane 1) and NIH/3T3 cell lysate (Lane 2). SET07 (arrow) was detected using purified Pab. Secondary HRP-anti-rabbit was used for signal visualization with chemiluminescence.



Formalin-fixed and paraffin-embedded human cancer tissue reacted with the primary antibody, which was peroxidase-conjugated to the secondary antibody, followed by DAB staining. This data demonstrates the use of this antibody for immunohistochemistry; clinical relevance has not been evaluated.