

## Product datasheet for **AP11168PU-N**

### IFITM3 Rabbit Polyclonal Antibody

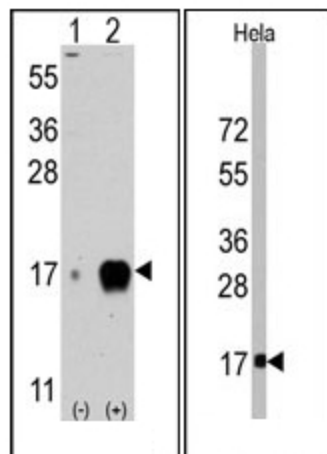
#### Product data:

Product Type:	Primary Antibodies
Applications:	WB
Recommended Dilution:	ELISA: 1/1,000. Western Blot: 1/50 - 1/100.
Reactivity:	Human
Host:	Rabbit
Isotype:	Ig
Clonality:	Polyclonal
Immunogen:	KLH conjugated synthetic peptide between 71~101 amino acids from the Center region of human IFITM3.
Specificity:	This antibody is specific to IFITM3 (Center).
Formulation:	PBS containing 0.09% (W/V) Sodium Azide as preservative. State: Purified State: Liquid purified Ig fraction
Concentration:	lot specific
Purification:	Saturated Ammonium Sulfate (SAS) precipitation followed by dialysis against PBS.
Conjugation:	Unconjugated
Storage:	Store the antibody undiluted at 2-8°C for one month or (in aliquots) at -20°C for longer. Avoid repeated freezing and thawing.
Stability:	Shelf life: one year from despatch.
Gene Name:	interferon induced transmembrane protein 3
Database Link:	<a href="#">Entrez Gene 10410 Human Q01628</a>
Background:	The family of interferon-induced transmembrane protein (Ifitm/mil/fragilis) cell surface proteins may modulate cell adhesion and influence cell differentiation.
Synonyms:	1-8U



[View online »](#)

## Product images:



(Left) Western blot analysis of IFITM3 (arrow) using rabbit polyclonal IFITM3 Antibody (Center). 293 cell lysates (2 ug/lane) either nontransfected (Lane 1) or transiently transfected with the IFITM3 gene (Lane 2) (Origene Technologies). (Right) Western blot analysis of anti-IFITM3 Antibody (Center) in HeLa cell line lysates (35 ug/lane). IFITM3 (arrow) was detected using the purified Pab (1/60 dilution).