

## Product datasheet for **AP11157PU-N**

### KMT2A (C-term) Rabbit Polyclonal Antibody

#### Product data:

Product Type:	Primary Antibodies
Applications:	IHC, WB
Recommended Dilution:	ELISA: 1/1,000. Western blot: 1/100-1/500. Immunohistochemistry: 1/50-1/100.
Reactivity:	Human
Host:	Rabbit
Isotype:	Ig
Clonality:	Polyclonal
Immunogen:	This antibody is generated from rabbits immunized with a KLH conjugated synthetic peptide selected from the C-terminal region of human HRX.
Specificity:	This antibody is specific to HRX (C-term).
Formulation:	PBS containing 0.09% (W/V) Sodium Azide as preservative. State: Purified State: Liquid purified Ig fraction.
Concentration:	lot specific
Purification:	Protein G Chromatography, eluted with high and low pH buffers and neutralized immediately, followed by dialysis against PBS.
Conjugation:	Unconjugated
Storage:	Store the antibody undiluted at 2-8°C for one month or (in aliquots) at -20°C for longer. Avoid repeated freezing and thawing.
Stability:	Shelf life: one year from despatch.
Gene Name:	lysine methyltransferase 2A
Database Link:	<a href="#">Entrez Gene 4297 Human Q03164</a>



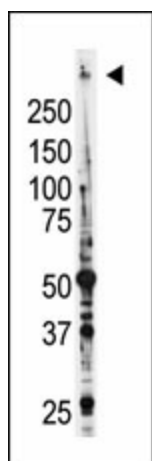
[View online »](#)

**Background:**

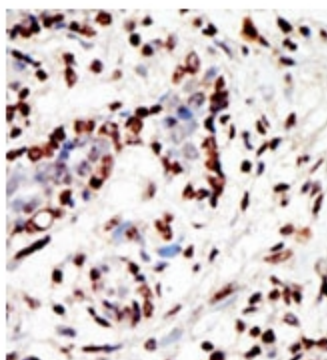
The gene variously symbolized ALL1, HRX, or MLL located on 11q23 has been demonstrated to be fused with a number of translocation partners in cases of leukemia. Tse et al. (1995) characterized 2 t(1;11)(q21;q23) translocations that fused the MLL gene to a gene on chromosomal band 1q21, AF1Q, in 2 infants with acute myelomonocytic leukemia. In one of these patients, the derivative chromosome 11 represented an in-frame fusion of the N-terminal portion of the MLL gene to the complete AF1Q open reading frame, whereas the derivative chromosome 1 did not give rise to an open reading frame. This observation suggested that the N-terminal portion of the MLL gene is critical for leukemogenesis in translocations involving band 11q23.

**Synonyms:**

ALL1, CXXC7, HTRX, KMT2A, TRX1, ALL-1

**Product images:**


Western Blot analysis using Polyclonal Antibody (Pab)



Formalin-fixed and paraffin-embedded human cancer tissue reacted with the primary antibody, which was peroxidase-conjugated to the secondary antibody, followed by AEC staining. This data demonstrates the use of this antibody for immunohistochemistry; clinical relevance has not been evaluated.