

Product datasheet for **AP11118PU-N**

ENT1 (SLC29A1) Rabbit Polyclonal Antibody

Product data:

Product Type:	Primary Antibodies
Applications:	WB
Recommended Dilution:	ELISA: 1/1,000. Western Blot: 1-50-1/100.
Reactivity:	Human
Host:	Rabbit
Isotype:	Ig
Clonality:	Polyclonal
Immunogen:	This antibody is generated from rabbits immunized with a KLH conjugated synthetic peptide corresponding to amino acid residues surrounding S254 of human ENT1.
Specificity:	This antibody is specific to ENT1 (amino acids surrounding Ser254).
Formulation:	PBS containing 0.09% (W/V) Sodium Azide as preservative. State: Aff - Purified State: Liquid purified Ig fraction.
Concentration:	lot specific
Purification:	Protein A Chromatography, eluted with high and low pH buffers and neutralized immediately, followed by dialysis against PBS.
Conjugation:	Unconjugated
Storage:	Store the antibody undiluted at 2-8°C for one month or (in aliquots) at -20°C for longer. Avoid repeated freezing and thawing.
Stability:	Shelf life: one year from despatch.
Gene Name:	solute carrier family 29 member 1 (Augustine blood group)
Database Link:	Entrez Gene 2030 Human Q99808



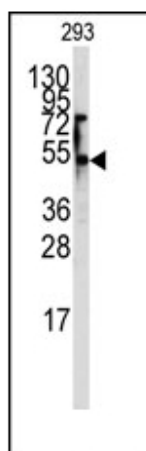
[View online »](#)

Background:

ENT1 is a member of the equilibrative nucleoside transporter family. It is a transmembrane glycoprotein that localizes to the plasma and mitochondrial membranes and mediates the cellular uptake of nucleosides from the surrounding medium. The protein is categorized as an equilibrative (as opposed to concentrative) transporter that is sensitive to inhibition by nitrobenzylthioinosine (NBMPR). Nucleoside transporters are required for nucleotide synthesis in cells that lack de novo nucleoside synthesis pathways, and are also necessary for the uptake of cytotoxic nucleosides used for cancer and viral chemotherapies.

Synonyms:

ENT1; MGC1465; MGC3778; OTTHUMP00000016509; OTTHUMP00000016510; OTTHUMP00000016511; OTTHUMP00000016512

Product images:

Western blot analysis of anti-ENT1 (Slc29a1) Antibody (S254) in 293 cell line lysates (35ug/lane). ENT1 (arrow) was detected using the purified Pab.