

## Product datasheet for **AP11104PU-N**

### **HAT1 (C-term) Rabbit Polyclonal Antibody**

#### **Product data:**

Product Type:	Primary Antibodies
Applications:	WB
Recommended Dilution:	<b>ELISA:</b> 1/1000. <b>Western Blot:</b> 1/100-1/500.
Reactivity:	Human
Host:	Rabbit
Isotype:	Ig
Clonality:	Polyclonal
Immunogen:	KLH conjugated synthetic peptide between 390~419 amino acids from the C-terminal region of Human HAT1
Specificity:	This antibody is specific to Human HAT1 (C-term).
Formulation:	PBS containing 0.09% (W/V) Sodium Azide as preservative State: Purified State: Liquid purified Ig fraction
Concentration:	lot specific
Purification:	Protein G Chromatography, eluted with high and low pH buffers and neutralized immediately, followed by dialysis against PBS
Conjugation:	Unconjugated
Storage:	Store undiluted at 2-8°C for one month or (in aliquots) at -20°C for longer. Avoid repeated freezing and thawing.
Stability:	Shelf life: one year from despatch.
Gene Name:	histone acetyltransferase 1
Database Link:	<a href="#">Entrez Gene 8520 Human O14929</a>



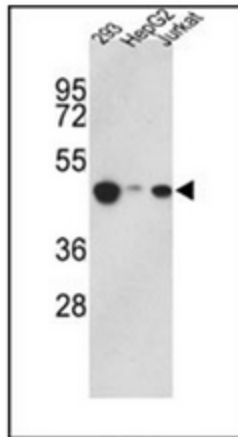
[View online »](#)

**Background:**

Histone acetylation, particularly of histone H4, has been proposed to play an important role in replication-dependent nucleosome assembly. The HAT1 protein contains D, A, and B motifs, which are present in many N-acetyltransferases, including those that acetylate substrates other than histones. The HAT1 holoenzyme consists of 2 subunits: the catalytic 46-kD HAT1 and the accessory p46. The p46 subunit stimulated the activity of HAT1 and bound to core histones. The HAT1 holoenzyme acetylated newly synthesized but not nucleosomal histone H4 at lys5 and lys12, and, to a lesser extent, histone H2A at lys5. HAT1 and p46 polypeptides are located in the nucleus of S-phase cells. HAT1 may play a role in telomeric silencing.

**Synonyms:**

KAT1

**Product images:**

Western blot analysis of HAT1 Antibody (C-term) in 293, HepG2, Jurkat cell line lysates (35ug/lane). HAT1 (arrow) was detected using the purified Pab.