

Product datasheet for **AP11091PU-N**

SETDB1 (C-term) Rabbit Polyclonal Antibody

Product data:

Product Type:	Primary Antibodies
Applications:	WB
Recommended Dilution:	ELISA: 1/1,000. Western blot: 1/100~1/500.
Reactivity:	Human
Host:	Rabbit
Isotype:	Ig
Clonality:	Polyclonal
Immunogen:	This antibody is generated from rabbits immunized with a KLH conjugated synthetic peptide selected from the C-terminal region of human SETDB1.
Specificity:	This antibody is specific to SETDB1 (C-term). Predicted to react with Mouse and DANRE (100% Antigen Homology).
Formulation:	PBS containing 0.09% (W/V) Sodium Azide as preservative. State: Purified State: Liquid purified Ig fraction.
Concentration:	lot specific
Purification:	Protein G Chromatography, eluted with high and low pH buffers and neutralized immediately, followed by dialysis against PBS.
Conjugation:	Unconjugated
Storage:	Store the antibody undiluted at 2-8°C for one month or (in aliquots) at -20°C for longer. Avoid repeated freezing and thawing.
Stability:	Shelf life: one year from despatch.
Gene Name:	SET domain bifurcated 1
Database Link:	Entrez Gene 9869 Human Q15047



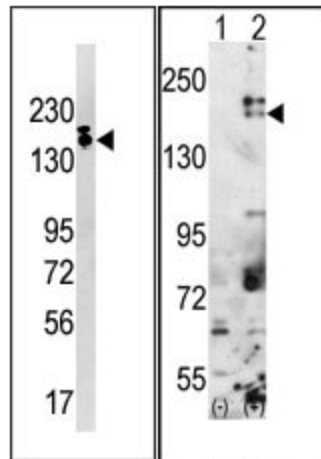
[View online »](#)

Background:

The SET domain is a highly conserved, approximately 150-amino acid motif implicated in the modulation of chromatin structure. It was originally identified as part of a larger conserved region present in the *Drosophila* Trithorax protein and was subsequently identified in the *Drosophila* Su(var)3-9 and 'Enhancer of zeste' proteins, from which the acronym SET is derived. Studies have suggested that the SET domain may be a signature of proteins that modulate transcriptionally active or repressed chromatin states through chromatin remodeling activities.

Synonyms:

ESET, KMT1E, KIAA0067

Product images:


LEFT: Western blot analysis of anti-SETDB1 Pab in Ramos cell line lysate (35ug/lane). SETDB1 (arrow) was detected using the purified Pab (1:60 dilution). RIGHT: Western blot analysis of SETDB1 (arrow) using rabbit polyclonal SETDB1 Antibody (C-term). 293 cell lysates (2 ug/lane) either nontransfected (Lane 1) or transiently transfected with the SETDB1 gene (Lane 2) (Origene Technologies).