

Product datasheet for **AP11080PU-N**

UBA2 (C-term) Rabbit Polyclonal Antibody

Product data:

Product Type:	Primary Antibodies
Applications:	IHC, WB
Recommended Dilution:	ELISA: 1/1,000. Western blot: 1/100~1/500. Immunohistochemistry: 1/50~1/100.
Reactivity:	Human
Host:	Rabbit
Isotype:	Ig
Clonality:	Polyclonal
Immunogen:	This antibody is generated from rabbits immunized with a KLH conjugated synthetic peptide selected from the C-terminal region of human UBA2.
Specificity:	This antibody is specific to UBA2 (C-term).
Formulation:	PBS containing 0.09% (W/V) Sodium Azide as preservative. State: Purified State: Liquid purified Ig fraction.
Concentration:	lot specific
Purification:	Protein G Chromatography, eluted with high and low pH buffers and neutralized immediately, followed by dialysis against PBS.
Conjugation:	Unconjugated
Storage:	Store the antibody undiluted at 2-8°C for one month or (in aliquots) at -20°C for longer. Avoid repeated freezing and thawing.
Stability:	Shelf life: one year from despatch.
Gene Name:	ubiquitin like modifier activating enzyme 2
Database Link:	Entrez Gene 10054 Human Q9UBT2



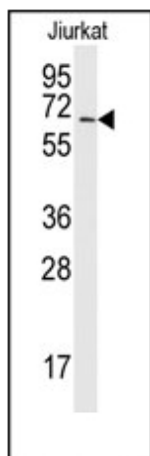
[View online »](#)

Background:

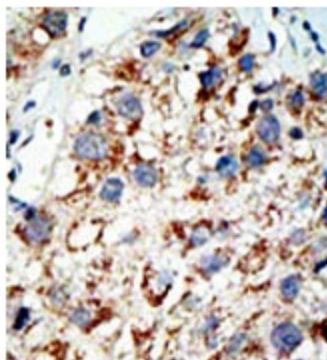
Ubiquitin is covalently attached to target proteins by a multienzymatic system consisting of E1 (ubiquitin-activating), E2 (ubiquitin-conjugating), and E3 (ubiquitin-ligating) enzymes. NEDD8, a ubiquitin-like protein, is conjugated to proteins in a manner analogous to ubiquitylation. beta-amyloid precursor protein-binding protein-1 (APPBP1) can bind to NEDD8 in rabbit reticulocyte lysates. However, since APPBP1 shows similarity to only the N-terminal domain of an E1 enzyme, it must interact with a protein showing similarity to the C-terminal region of E1s. By searching sequence databases, a cDNAs encoding UBA3 was identified as the human homolog of yeast Uba3. The predicted 442-amino acid UBA3 protein shares 43% sequence identity with yeast Uba3. In vitro, UBA3 formed a complex with APPBP1 and a thioester linkage with NEDD8. APPBP1/UBA3 complex may function as an E1-like enzyme for the activation of NEDD8.

Synonyms:

SUMO-activating enzyme subunit 2, UBLE1B, ARX, HRIHFB2115

Product images:


Western blot analysis of anti-UBA2 (C-term) Antibody to detect UBA2 in Jurkat lysate.



Formalin-fixed and paraffin-embedded human cancer tissue reacted with the primary antibody, which was peroxidase-conjugated to the secondary antibody, followed by AEC staining. This data demonstrates the use of this antibody for immunohistochemistry; clinical relevance has not been evaluated.